

## PSP Polyclonal Antibody

Catalog No: #41701

Package Size: #41701-1 50ul #41701-2 100ul

Orders: [order@signalwayantibody.com](mailto:order@signalwayantibody.com)Support: [tech@signalwayantibody.com](mailto:tech@signalwayantibody.com)

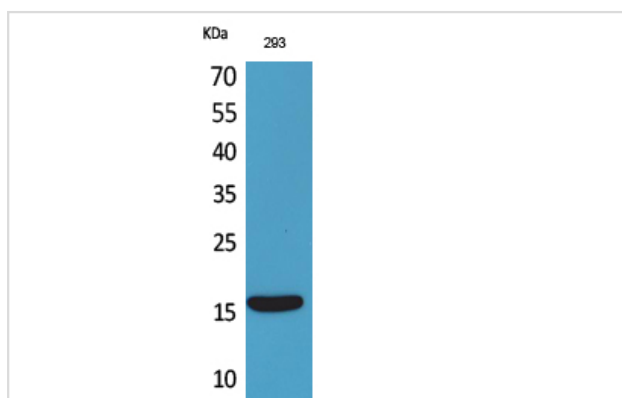
## Description

Product Name	PSP Polyclonal Antibody
Host Species	Rabbit
Clonality	Polyclonal
Purification	The antibody was affinity-purified from rabbit antiserum by affinity-chromatography using epitope-specific immunogen.
Applications	WB
Species Reactivity	Hu
Specificity	PSP Polyclonal Antibody detects endogenous levels of PSP protein.
Immunogen Type	peptide
Immunogen Description	Synthesized peptide derived from the C-terminal region of human PSP.
Target Name	PSP
Other Names	PSPN; Persephin; PSP
Accession No.	Swiss-Prot: O60542NCBI Gene ID: 5623
Uniprot	O60542
GeneID	5623;
SDS-PAGE MW	16kd
Concentration	1mg/ml
Formulation	Liquid in PBS containing 50% glycerol, 0.5% BSA and 0.02% sodium azide.
Storage	Store at -20°C/1 year

## Application Details

Western Blot: 1/500 - 1/2000.

## Images



Western Blot analysis of 293 cells using PSP Polyclonal Antibody

---

Note: This product is for in vitro research use only