

IL-28 Polyclonal Antibody

Catalog No: #41707

Package Size: #41707-1 50ul #41707-2 100ul

Orders: order@signalwayantibody.comSupport: tech@signalwayantibody.com

Description

Product Name	IL-28 Polyclonal Antibody
Host Species	Rabbit
Clonality	Polyclonal
Purification	The antibody was affinity-purified from rabbit antiserum by affinity-chromatography using epitope-specific immunogen.
Applications	WB ELISA
Species Reactivity	Hu
Specificity	IL-28 Polyclonal Antibody detects endogenous levels of IL-28 protein.
Immunogen Type	peptide
Immunogen Description	Synthesized peptide derived from the C-terminal region of human IL-28.
Target Name	IL-28
Other Names	IL28A; IFNL2; ZCYTO20; Interleukin-28A; IL-28A; Cytokine Zcyto20; Interferon lambda-2; IFN-lambda-2
Accession No.	Swiss-Prot: Q8IZJ0NCBI Gene ID: 282616
Uniprot	Q8IZJ0
GeneID	282616;
SDS-PAGE MW	25kd
Concentration	1mg/ml
Formulation	Liquid in PBS containing 50% glycerol, 0.5% BSA and 0.02% sodium azide.
Storage	Store at -20°C/1 year

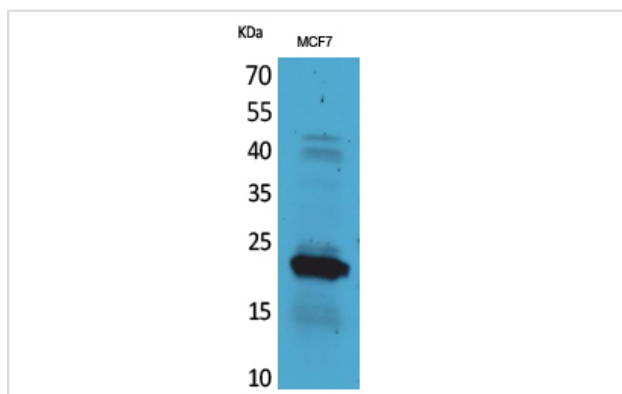
Application Details

Western Blot: 1/500 - 1/2000.

ELISA: 1/20000.

Not yet tested in other applications.

Images



Western Blot analysis of MCF7 cells using IL-28 Polyclonal Antibody

Note: This product is for in vitro research use only