

## BMP-8A Polyclonal Antibody

Catalog No: #41708

Package Size: #41708-1 50ul #41708-2 100ul

Orders: [order@signalwayantibody.com](mailto:order@signalwayantibody.com)Support: [tech@signalwayantibody.com](mailto:tech@signalwayantibody.com)

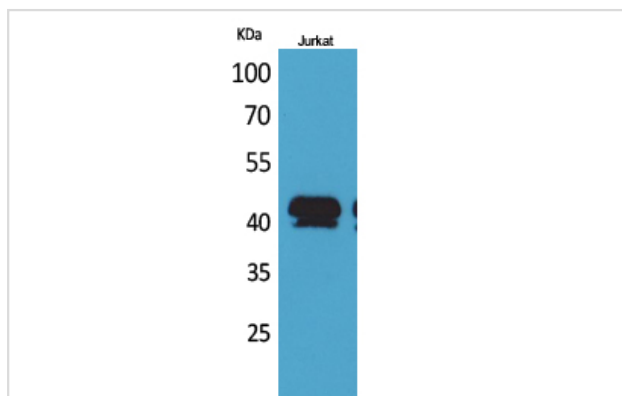
## Description

Product Name	BMP-8A Polyclonal Antibody
Host Species	Rabbit
Clonality	Polyclonal
Purification	The antibody was affinity-purified from rabbit antiserum by affinity-chromatography using epitope-specific immunogen.
Applications	WB
Species Reactivity	Hu Ms Rt
Specificity	BMP-8A Polyclonal Antibody detects endogenous levels of BMP-8A protein.
Immunogen Type	peptide
Immunogen Description	Synthesized peptide derived from the Internal region of human BMP-8A.
Target Name	BMP-8A
Other Names	BMP8A; Bone morphogenetic protein 8A; BMP-8A
Accession No.	Swiss-Prot: Q7Z5Y6NCBI Gene ID: 353500
Uniprot	Q7Z5Y6
GeneID	353500;
SDS-PAGE MW	44kd
Concentration	1mg/ml
Formulation	Liquid in PBS containing 50% glycerol, 0.5% BSA and 0.02% sodium azide.
Storage	Store at -20°C/1 year

## Application Details

Western Blot: 1/500 - 1/2000.

## Images



Western Blot analysis of Jurkat cells using BMP-8A Polyclonal Antibody

---

Note: This product is for in vitro research use only