

## Lymphotactin Polyclonal Antibody

Catalog No: #41709

Package Size: #41709-1 50ul #41709-2 100ul

Orders: [order@signalwayantibody.com](mailto:order@signalwayantibody.com)Support: [tech@signalwayantibody.com](mailto:tech@signalwayantibody.com)

## Description

Product Name	Lymphotactin Polyclonal Antibody
Host Species	Rabbit
Clonality	Polyclonal
Purification	The antibody was affinity-purified from rabbit antiserum by affinity-chromatography using epitope-specific immunogen.
Applications	WB ELISA
Species Reactivity	Hu
Specificity	Lymphotactin Polyclonal Antibody detects endogenous levels of Lymphotactin protein.
Immunogen Type	peptide
Immunogen Description	Synthesized peptide derived from the Internal region of human Lymphotactin.
Target Name	Lymphotactin
Other Names	XCL1; LTN; SCYC1; Lymphotactin; ATAC; C motif chemokine 1; Cytokine SCM-1; Lymphotaxin; SCM-1-alpha; Small-inducible cytokine C1; XC chemokine ligand 1; XCL2; SCYC2; Cytokine SCM-1 beta; C motif chemokine 2; XC chemokine ligand 2
Accession No.	Swiss-Prot: P47992NCBI Gene ID: 6375
Uniprot	P47992
GeneID	6375;
SDS-PAGE MW	25kd
Concentration	1mg/ml
Formulation	Liquid in PBS containing 50% glycerol, 0.5% BSA and 0.02% sodium azide.
Storage	Store at -20°C/1 year

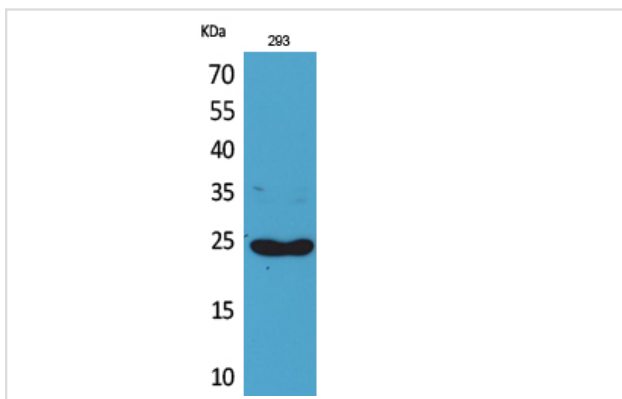
## Application Details

Western Blot: 1/500 - 1/2000.

ELISA: 1/20000.

Not yet tested in other applications.

## Images



Western Blot analysis of 293 cells using Lymphotactin Polyclonal Antibody

---

Note: This product is for in vitro research use only