

CMTM6 Polyclonal Antibody

Catalog No: #41710

Package Size: #41710-1 50ul #41710-2 100ul

Orders: order@signalwayantibody.com

Support: tech@signalwayantibody.com

Description

Product Name	CMTM6 Polyclonal Antibody
Host Species	Rabbit
Clonality	Polyclonal
Purification	The antibody was affinity-purified from rabbit antiserum by affinity-chromatography using epitope-specific immunogen.
Applications	WB ELISA
Species Reactivity	Hu
Specificity	CMTM6 Polyclonal Antibody detects endogenous levels of CMTM6 protein.
Immunogen Type	peptide
Immunogen Description	Synthesized peptide derived from the C-terminal region of human CMTM6.
Target Name	CMTM6
Other Names	CMTM6; CKLFSF6; CKLF-like MARVEL transmembrane domain-containing protein 6; Chemokine-like factor superfamily member 6
Accession No.	Swiss-Prot: Q9NX76NCBI Gene ID: 54918
Uniprot	Q9NX76
GeneID	54918;
SDS-PAGE MW	20kd
Concentration	1mg/ml
Formulation	Liquid in PBS containing 50% glycerol, 0.5% BSA and 0.02% sodium azide.
Storage	Store at -20°C/1 year

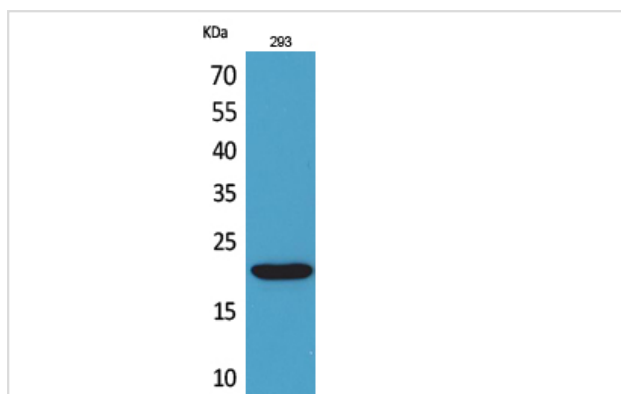
Application Details

Western Blot: 1/500 - 1/2000.

ELISA: 1/20000.

Not yet tested in other applications.

Images



Western Blot analysis of 293 cells using CMTM6 Polyclonal Antibody

Note: This product is for in vitro research use only