

SCCA1/2 Polyclonal Antibody

Catalog No: #41712

Package Size: #41712-1 50ul #41712-2 100ul

Orders: order@signalwayantibody.com

Support: tech@signalwayantibody.com

Description

Product Name	SCCA1/2 Polyclonal Antibody
Host Species	Rabbit
Clonality	Polyclonal
Purification	The antibody was affinity-purified from rabbit antiserum by affinity-chromatography using epitope-specific immunogen.
Applications	WB ELISA
Species Reactivity	Hu
Specificity	SCCA1/2 Polyclonal Antibody detects endogenous levels of SCCA1/2 protein.
Immunogen Type	peptide
Immunogen Description	Synthesized peptide derived from the Internal region of human SCCA1/2.
Target Name	SCCA1/2
Other Names	SERPINB3; SCCA; SCCA1; Serpin B3; Protein T4-A; Squamous cell carcinoma antigen 1; SCCA-1
Accession No.	Swiss-Prot: P29508NCBI Gene ID: 6317
Uniprot	P29508
GeneID	6317;
SDS-PAGE MW	45kd
Concentration	1mg/ml
Formulation	Liquid in PBS containing 50% glycerol, 0.5% BSA and 0.02% sodium azide.
Storage	Store at -20°C/1 year

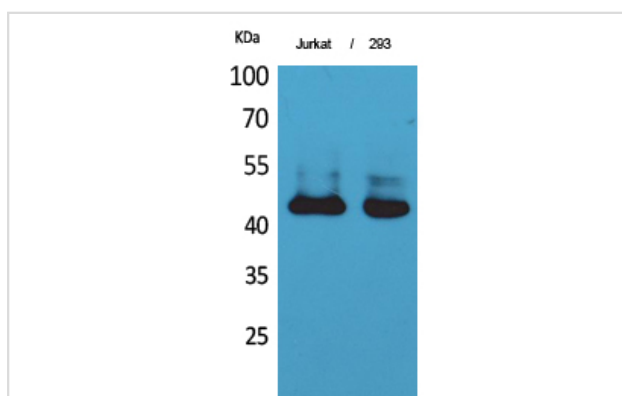
Application Details

Western Blot: 1/500 - 1/2000.

ELISA: 1/20000.

Not yet tested in other applications.

Images



Western Blot analysis of Jurkat 293 cells using SCCA1/2 Polyclonal Antibody

Note: This product is for in vitro research use only