

EPAS-1 Polyclonal Antibody

Catalog No: #41719

Package Size: #41719-1 50ul #41719-2 100ul

Orders: order@signalwayantibody.comSupport: tech@signalwayantibody.com

Description

Product Name	EPAS-1 Polyclonal Antibody
Host Species	Rabbit
Clonality	Polyclonal
Purification	The antibody was affinity-purified from rabbit antiserum by affinity-chromatography using epitope-specific immunogen.
Applications	WB ELISA
Species Reactivity	Hu Ms Rt
Specificity	EPAS-1 Polyclonal Antibody detects endogenous levels of EPAS-1 protein.
Immunogen Type	peptide
Immunogen Description	Synthesized peptide derived from human EPAS-1 around the non-acetylation site of K385.
Target Name	EPAS-1
Other Names	EPAS1; BHLHE73; HIF2A; MOP2; PASD2; Endothelial PAS domain-containing protein 1; EPAS-1; Basic-helix-loop-helix-PAS protein MOP2; Class E basic helix-loop-helix protein 73; bHLHe73;
Accession No.	Swiss-Prot: Q99814NCBI Gene ID: 2034
Uniprot	Q99814
GeneID	2034;
SDS-PAGE MW	96kd
Concentration	1mg/ml
Formulation	Liquid in PBS containing 50% glycerol, 0.5% BSA and 0.02% sodium azide.
Storage	Store at -20°C/1 year

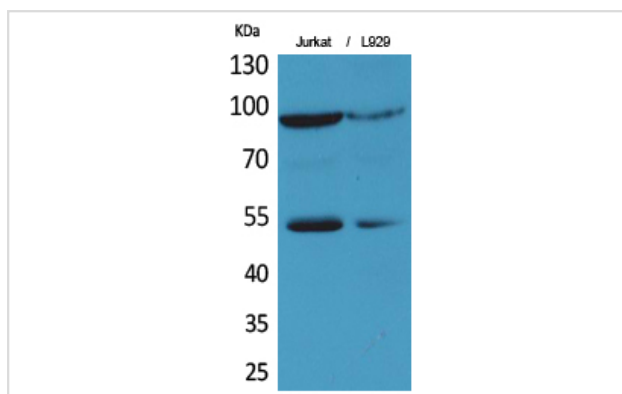
Application Details

Western Blot: 1/500 - 1/2000.

ELISA: 1/20000.

Not yet tested in other applications.

Images



Western Blot analysis of Jurkat L929 cells using EPAS-1 Polyclonal Antibody

Note: This product is for in vitro research use only