

## KLF13 Polyclonal Antibody

Catalog No: #41724

Package Size: #41724-1 50ul #41724-2 100ul

Orders: order@signalwayantibody.com

Support: tech@signalwayantibody.com

## Description

Product Name	KLF13 Polyclonal Antibody
Host Species	Rabbit
Clonality	Polyclonal
Purification	The antibody was affinity-purified from rabbit antiserum by affinity-chromatography using epitope-specific immunogen.
Applications	WB ELISA
Species Reactivity	Hu Ms
Specificity	KLF13 Polyclonal Antibody detects endogenous levels of KLF13 protein.
Immunogen Type	peptide
Immunogen Description	Synthesized peptide derived from human KLF13 around the non-acetylation site of K166.
Target Name	KLF13
Other Names	KLF13; BTEB3; NSLP1; Krueppel-like factor 13; Basic transcription element-binding protein 3; BTE-binding protein 3; Novel Sp1-like zinc finger transcription factor 1;
Accession No.	Swiss-Prot: Q9Y2Y9NCBI Gene ID: 51621
Uniprot	Q9Y2Y9
GeneID	51621;
SDS-PAGE MW	31kd
Concentration	1mg/ml
Formulation	Liquid in PBS containing 50% glycerol, 0.5% BSA and 0.02% sodium azide.
Storage	Store at -20°C/1 year

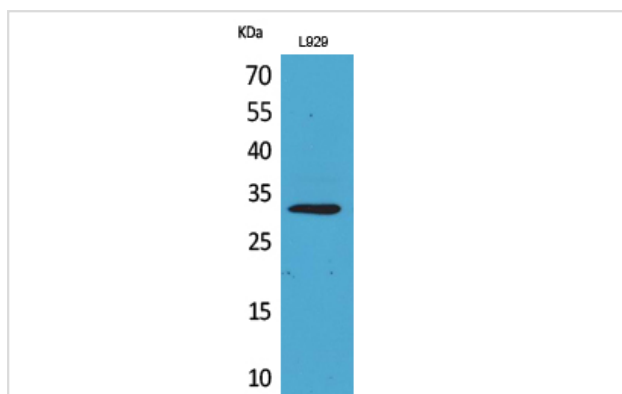
## Application Details

Western Blot: 1/500 - 1/2000.

ELISA: 1/20000.

Not yet tested in other applications.

## Images



Western Blot analysis of L929 cells using KLF13 Polyclonal Antibody

---

Note: This product is for in vitro research use only