

## IL-6 Polyclonal Antibody

Catalog No: #41739

Package Size: #41739-1 50ul #41739-2 100ul

Orders: order@signalwayantibody.com

Support: tech@signalwayantibody.com

## Description

|                       |  |
|-----------------------|--|
| Product Name          | IL-6 Polyclonal Antibody   |
| Host Species          | Rabbit   |
| Clonality             | Polyclonal   |
| Purification          | The antibody was affinity-purified from rabbit antiserum by affinity-chromatography using epitope-specific immunogen.  |
| Applications          | WB,IHC-p,IF,ELISA  |
| Species Reactivity    | Human,Rat,Mouse  |
| Specificity           | IL-6 Polyclonal Antibody detects endogenous levels of IL-6 protein.  |
| Immunogen Description | Synthesized peptide derived from the Internal region of human IL-6.  |
| Target Name           | IL-6   |
| Other Names           | IL6; IFNB2; Interleukin-6; IL-6; B-cell stimulatory factor 2; BSF-2; CTL differentiation factor; CDF; Hybridoma growth factor; Interferon beta-2; IFN-beta-2 |
| Accession No.         | Swiss-Prot: P05231NCBI Gene ID: 3569   |
| Uniprot               | P05231   |
| GeneID                | 3569;  |
| SDS-PAGE MW           | 23kd   |
| Concentration         | 1mg/ml   |
| Formulation           | Liquid in PBS containing 50% glycerol, 0.5% BSA and 0.02% sodium azide.  |
| Storage               | Store at -20°C/1 year  |

## Application Details

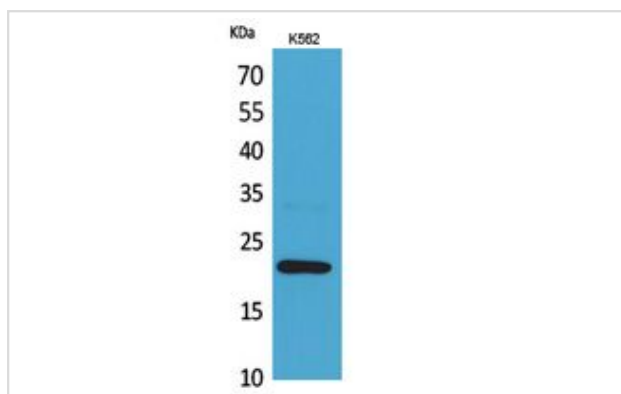
Western Blot: 1/500 - 1/2000.

ELISA: 1/20000.

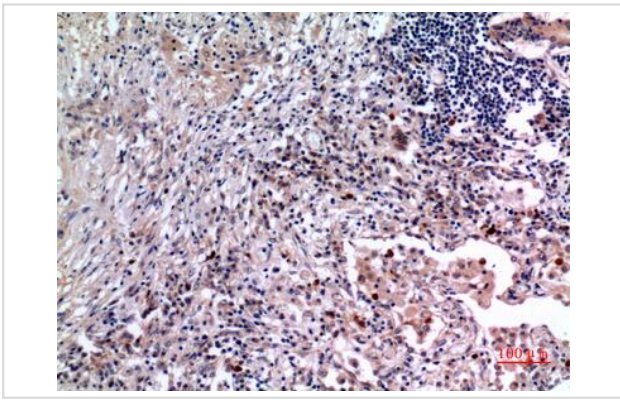
Not yet tested in other applications.

IHC-p: 1/100-1/300

## Images



Western Blot analysis of K562 cells using IL-6 Polyclonal Antibody.



Immunohistochemical analysis of paraffin-embedded human-lung, antibody was diluted at 1:100

---

Note: This product is for in vitro research use only