

Macroglobulin α -2 Polyclonal Antibody

Catalog No: #41755

Package Size: #41755-1 50ul #41755-2 100ul

Orders: order@signalwayantibody.comSupport: tech@signalwayantibody.com

Description

Product Name	Macroglobulin α -2 Polyclonal Antibody
Host Species	Rabbit
Clonality	Polyclonal
Purification	The antibody was affinity-purified from rabbit antiserum by affinity-chromatography using epitope-specific immunogen.
Applications	WB ELISA
Species Reactivity	Hu
Specificity	Macroglobulin α -2 Polyclonal Antibody detects endogenous levels of Macroglobulin α -2 protein.
Immunogen Type	peptide
Immunogen Description	Synthesized peptide derived from the Internal region of human Macroglobulin α -2.
Target Name	Macroglobulin α -2
Other Names	A2M; CPAMD5; FWP007; Alpha-2-macroglobulin; Alpha-2-M; C3 and PZP-like alpha-2-macroglobulin domain-containing protein 5
Accession No.	Swiss-Prot: P01023NCBI Gene ID: 2
Uniprot	P01023
GeneID	2;
SDS-PAGE MW	170kd
Concentration	1mg/ml
Formulation	Liquid in PBS containing 50% glycerol, 0.5% BSA and 0.02% sodium azide.
Storage	Store at -20°C/1 year

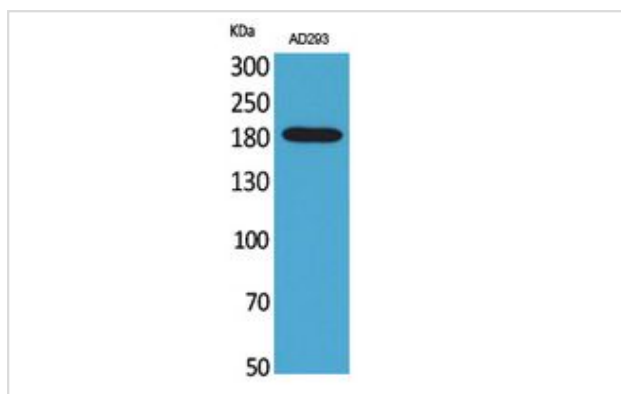
Application Details

Western Blot: 1/500 - 1/2000.

ELISA: 1/20000.

Not yet tested in other applications.

Images

Western Blot analysis of AD293 cells using Macroglobulin α -2 Polyclonal Antibody.

Note: This product is for in vitro research use only