

## L-Selectin Polyclonal Antibody

Catalog No: #41757

Package Size: #41757-1 50ul #41757-2 100ul

Orders: [order@signalwayantibody.com](mailto:order@signalwayantibody.com)Support: [tech@signalwayantibody.com](mailto:tech@signalwayantibody.com)

## Description

|                       |                                                                                                                                                                                                                                                   |
|-----------------------|---------------------------------------------------------------------------------------------------------------------------------------------------------------------------------------------------------------------------------------------------|
| Product Name          | L-Selectin Polyclonal Antibody                                                                                                                                                                                                                    |
| Host Species          | Rabbit                                                                                                                                                                                                                                            |
| Clonality             | Polyclonal                                                                                                                                                                                                                                        |
| Purification          | The antibody was affinity-purified from rabbit antiserum by affinity-chromatography using epitope-specific immunogen.                                                                                                                             |
| Applications          | WB ELISA                                                                                                                                                                                                                                          |
| Species Reactivity    | Hu Ms Rt                                                                                                                                                                                                                                          |
| Specificity           | L-Selectin Polyclonal Antibody detects endogenous levels of L-Selectin protein.                                                                                                                                                                   |
| Immunogen Type        | peptide                                                                                                                                                                                                                                           |
| Immunogen Description | Synthesized peptide derived from the Internal region of human L-Selectin.                                                                                                                                                                         |
| Target Name           | L-Selectin                                                                                                                                                                                                                                        |
| Other Names           | SELL; LNHR; LYAM1; L-selectin; CD62 antigen-like family member L; Leukocyte adhesion molecule 1; LAM-1; Leukocyte surface antigen Leu-8; Leukocyte-endothelial cell adhesion molecule 1; LECAM1; Lymph node homing receptor; TQ1; gp90-MEL; CD62L |
| Accession No.         | Swiss-Prot: P14151NCBI Gene ID: 6402                                                                                                                                                                                                              |
| Uniprot               | P14151                                                                                                                                                                                                                                            |
| GeneID                | 6402;                                                                                                                                                                                                                                             |
| SDS-PAGE MW           | 42kd                                                                                                                                                                                                                                              |
| Concentration         | 1mg/ml                                                                                                                                                                                                                                            |
| Formulation           | Liquid in PBS containing 50% glycerol, 0.5% BSA and 0.02% sodium azide.                                                                                                                                                                           |
| Storage               | Store at -20°C/1 year                                                                                                                                                                                                                             |

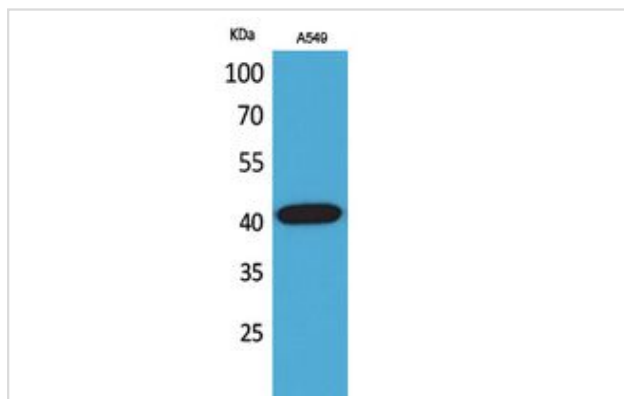
## Application Details

Western Blot: 1/500 - 1/2000.

ELISA: 1/20000.

Not yet tested in other applications.

## Images



Western Blot analysis of A549 cells using L-Selectin Polyclonal Antibody.

---

Note: This product is for in vitro research use only