

MCM7 Polyclonal Antibody

Catalog No: #41758

Package Size: #41758-1 50ul #41758-2 100ul

Orders: order@signalwayantibody.comSupport: tech@signalwayantibody.com

Description

Product Name	MCM7 Polyclonal Antibody
Host Species	Rabbit
Clonality	Polyclonal
Purification	The antibody was affinity-purified from rabbit antiserum by affinity-chromatography using epitope-specific immunogen.
Applications	WB ELISA
Species Reactivity	Hu Ms Rt
Specificity	MCM7 Polyclonal Antibody detects endogenous levels of MCM7 protein.
Immunogen Type	peptide
Immunogen Description	Synthesized peptide derived from the Internal region of human MCM7.
Target Name	MCM7
Other Names	MCM7; CDC47; MCM2; DNA replication licensing factor MCM7; CDC47 homolog; P1.1-MCM3
Accession No.	Swiss-Prot: P33993NCBI Gene ID: 4176
Uniprot	P33993
GeneID	4176;
SDS-PAGE MW	81kd
Concentration	1mg/ml
Formulation	Liquid in PBS containing 50% glycerol, 0.5% BSA and 0.02% sodium azide.
Storage	Store at -20°C/1 year

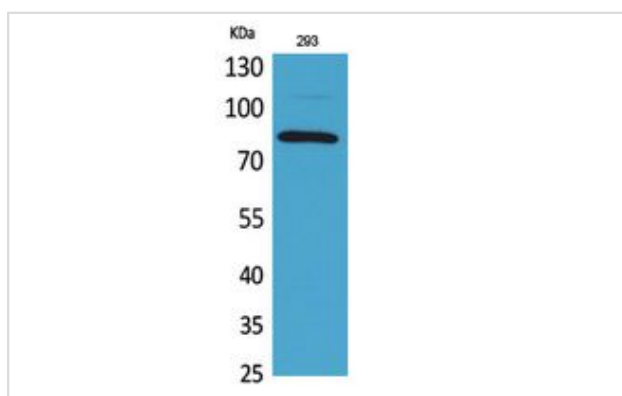
Application Details

Western Blot: 1/500 - 1/2000.

ELISA: 1/20000.

Not yet tested in other applications.

Images



Western Blot analysis of 293 cells using MCM7 Polyclonal Antibody.

Note: This product is for in vitro research use only