

ALPP/ALPPL2 Polyclonal Antibody

Catalog No: #41762

Package Size: #41762-1 50ul #41762-2 100ul

Orders: order@signalwayantibody.com

Support: tech@signalwayantibody.com

Description

Product Name	ALPP/ALPPL2 Polyclonal Antibody
Host Species	Rabbit
Clonality	Polyclonal
Purification	The antibody was affinity-purified from rabbit antiserum by affinity-chromatography using epitope-specific immunogen.
Applications	WB ELISA
Species Reactivity	Hu Ms
Specificity	ALPP/ALPPL2 Polyclonal Antibody detects endogenous levels of ALPP/ALPPL2 protein.
Immunogen Type	peptide
Immunogen Description	Synthesized peptide derived from the N-terminal region of human ALPP/ALPPL2.
Target Name	ALPP/ALPPL2
Other Names	ALPP; PLAP; Alkaline phosphatase, placental type; Alkaline phosphatase Regan isozyme; Placental alkaline phosphatase 1; PLAP-1; ALPPL2; ALPPL; Alkaline phosphatase, placental-like
Accession No.	Swiss-Prot: P05187/P10696NCBI Gene ID: 250/251
Uniprot	P05187
GeneID	250;
SDS-PAGE MW	60kd
Concentration	1mg/ml
Formulation	Liquid in PBS containing 50% glycerol, 0.5% BSA and 0.02% sodium azide.
Storage	Store at -20°C/1 year

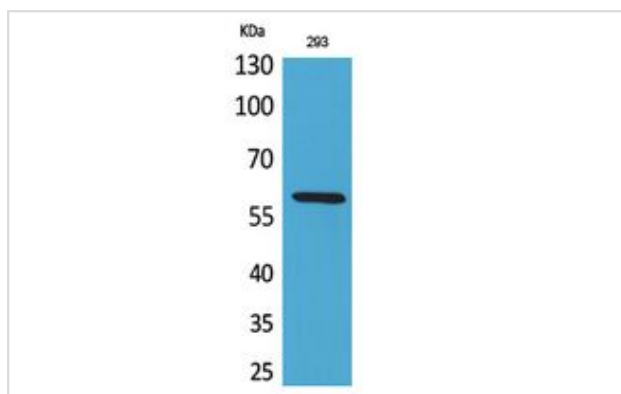
Application Details

Western Blot: 1/500 - 1/2000.

ELISA: 1/20000.

Not yet tested in other applications.

Images



Western Blot analysis of 293 cells using ALPP/ALPPL2 Polyclonal Antibody.

Note: This product is for in vitro research use only