

Laminin γ -2 Polyclonal Antibody

Catalog No: #41766

Package Size: #41766-1 50ul #41766-2 100ul

Orders: order@signalwayantibody.com

Support: tech@signalwayantibody.com

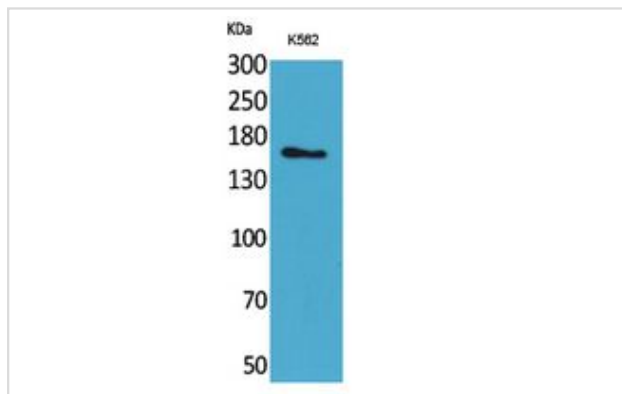
Description

Product Name	Laminin γ -2 Polyclonal Antibody
Host Species	Rabbit
Clonality	Polyclonal
Purification	The antibody was affinity-purified from rabbit antiserum by affinity-chromatography using epitope-specific immunogen.
Applications	WB
Species Reactivity	Hu Rt
Specificity	Laminin γ -2 Polyclonal Antibody detects endogenous levels of Laminin γ -2 protein.
Immunogen Type	peptide
Immunogen Description	Synthesized peptide derived from the C-terminal region of human Laminin γ -2.
Target Name	Laminin γ -2
Other Names	LAMC2; LAMB2T; LAMNB2; Laminin subunit gamma-2; Cell-scattering factor 140 kDa subunit; CSF 140 kDa subunit; Epiligrin subunit gamma; Kalinin subunit gamma; Kalinin/nicein/epiligrin 100 kDa subunit
Accession No.	Swiss-Prot: Q13753NCBI Gene ID: 3918
Uniprot	Q13753
GeneID	3918;
SDS-PAGE MW	135kd
Concentration	1mg/ml
Formulation	Liquid in PBS containing 50% glycerol, 0.5% BSA and 0.02% sodium azide.
Storage	Store at -20°C/1 year

Application Details

Western Blot: 1/500 - 1/2000.

Images

Western Blot analysis of K562 cells using Laminin γ -2 Polyclonal Antibody.

Note: This product is for in vitro research use only