

Cryopyrin Polyclonal Antibody

Catalog No: #41768

Package Size: #41768-1 50ul #41768-2 100ul

Orders: order@signalwayantibody.comSupport: tech@signalwayantibody.com

Description

Product Name	Cryopyrin Polyclonal Antibody
Host Species	Rabbit
Clonality	Polyclonal
Purification	The antibody was affinity-purified from rabbit antiserum by affinity-chromatography using epitope-specific immunogen.
Applications	WB ELISA IHC IF
Species Reactivity	Human;Mouse;Rat
Specificity	Cryopyrin Polyclonal Antibody detects endogenous levels of Cryopyrin protein.
Immunogen Description	Synthesized peptide derived from the Internal region of human Cryopyrin.
Target Name	Cryopyrin
Other Names	NLRP3; C1orf7; CIAS1; NALP3; PYPAF1; NACHT, LRR and PYD domains-containing protein 3; Angiotensin/vasopressin receptor AII/AVP-like; Caterpillar protein 1.1
Accession No.	Swiss-Prot: Q96P20NCBI Gene ID: 114548
Uniprot	Q96P20
GeneID	114548;
SDS-PAGE MW	115kd
Concentration	1mg/ml
Formulation	Liquid in PBS containing 50% glycerol, 0.5% BSA and 0.02% sodium azide.
Storage	Store at -20°C/1 year

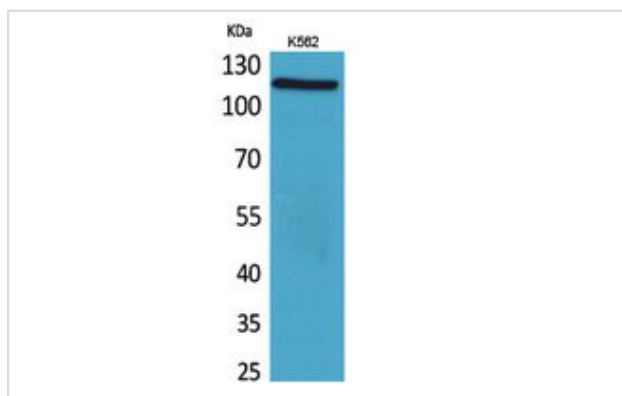
Application Details

Western Blot: 1/500 - 1/2000.

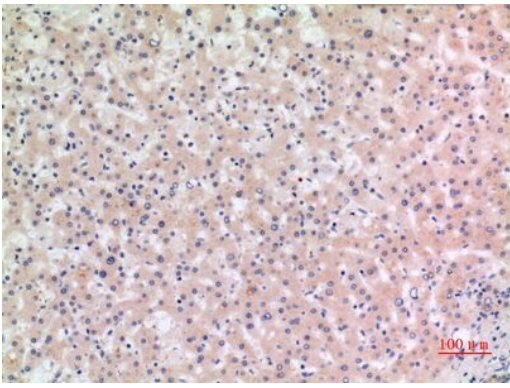
ELISA: 1/20000.

Not yet tested in other applications.

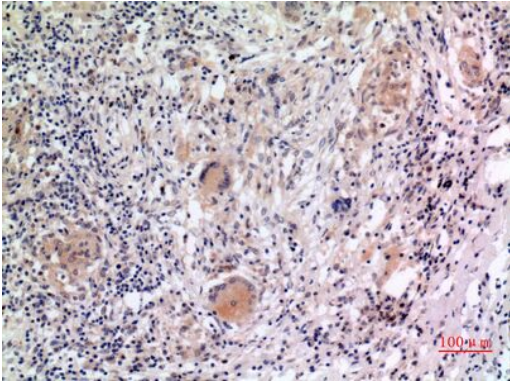
Images



Western Blot analysis of K562 cells using Cryopyrin Polyclonal Antibody.



Immunohistochemical analysis of paraffin-embedded human-liver, antibody was diluted at 1:100



Immunohistochemical analysis of paraffin-embedded human-lung, antibody was diluted at 1:100

Note: This product is for in vitro research use only