

## OAT1 Polyclonal Antibody

Catalog No: #41770

Package Size: #41770-1 50ul #41770-2 100ul

Orders: [order@signalwayantibody.com](mailto:order@signalwayantibody.com)Support: [tech@signalwayantibody.com](mailto:tech@signalwayantibody.com)

## Description

Product Name	OAT1 Polyclonal Antibody
Host Species	Rabbit
Clonality	Polyclonal
Purification	The antibody was affinity-purified from rabbit antiserum by affinity-chromatography using epitope-specific immunogen.
Applications	WB ELISA
Species Reactivity	Hu
Specificity	OAT1 Polyclonal Antibody detects endogenous levels of OAT1 protein.
Immunogen Type	peptide
Immunogen Description	Synthesized peptide derived from the N-terminal region of human OAT1.
Target Name	OAT1
Other Names	SLC22A6; OAT1; PAHT; Solute carrier family 22 member 6; Organic anion transporter 1; hOAT1; PAH transporter; hPAHT; Renal organic anion transporter 1; hROAT1
Accession No.	Swiss-Prot: Q4U2R8NCBI Gene ID: 9356
Uniprot	Q4U2R8
GeneID	9356;
SDS-PAGE MW	70kd
Concentration	1mg/ml
Formulation	Liquid in PBS containing 50% glycerol, 0.5% BSA and 0.02% sodium azide.
Storage	Store at -20°C/1 year

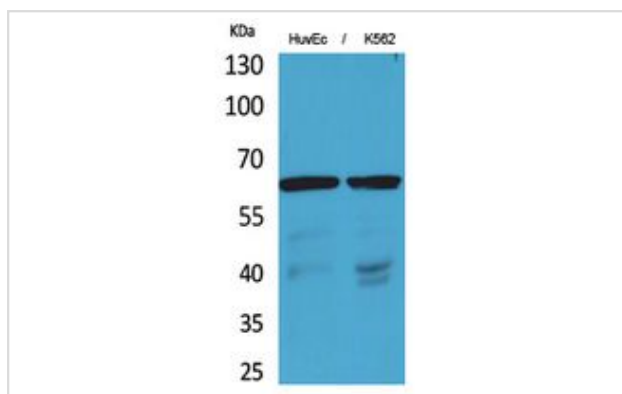
## Application Details

Western Blot: 1/500 - 1/2000.

ELISA: 1/20000.

Not yet tested in other applications.

## Images



Western Blot analysis of HuvEc, K562 cells using OAT1 Polyclonal Antibody.

---

Note: This product is for in vitro research use only