

IFN- $\omega$  Polyclonal Antibody

Catalog No: #41800

Package Size: #41800-1 50ul #41800-2 100ul

Orders: order@signalwayantibody.com

Support: tech@signalwayantibody.com

## Description

Product Name	IFN- $\omega$ Polyclonal Antibody
Host Species	Rabbit
Clonality	Polyclonal
Purification	The antibody was affinity-purified from rabbit antiserum by affinity-chromatography using epitope-specific immunogen.
Applications	WB ELISA
Species Reactivity	Hu
Specificity	IFN- $\omega$ Polyclonal Antibody detects endogenous levels of IFN- $\omega$ protein.
Immunogen Type	peptide
Immunogen Description	Synthesized peptide derived from the C-terminal region of human IFN- $\omega$ .
Target Name	IFN- $\omega$
Other Names	IFNW1; Interferon omega-1; Interferon alpha-II-1
Accession No.	Swiss-Prot: P05000NCBI Gene ID: 3467
Uniprot	P05000
GeneID	3467;
SDS-PAGE MW	22kd
Concentration	1mg/ml
Formulation	Liquid in PBS containing 50% glycerol, 0.5% BSA and 0.02% sodium azide.
Storage	Store at -20°C/1 year

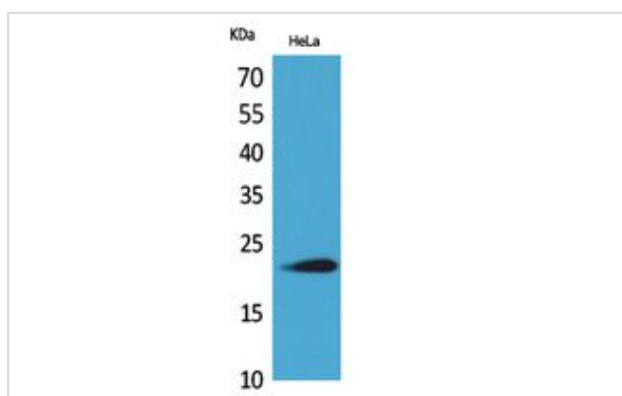
## Application Details

Western Blot: 1/500 - 1/2000.

ELISA: 1/20000.

Not yet tested in other applications.

## Images

Western Blot analysis of HeLa cells using IFN- $\omega$  Polyclonal Antibody.

---

Note: This product is for in vitro research use only