

## MYH-pan Polyclonal Antibody

Catalog No: #41807

Package Size: #41807-1 50ul #41807-2 100ul

Orders: [order@signalwayantibody.com](mailto:order@signalwayantibody.com)Support: [tech@signalwayantibody.com](mailto:tech@signalwayantibody.com)

## Description

Product Name	MYH-pan Polyclonal Antibody
Host Species	Rabbit
Clonality	Polyclonal
Purification	The antibody was affinity-purified from rabbit antiserum by affinity-chromatography using epitope-specific immunogen.
Applications	WB ELISA
Species Reactivity	Hu Ms Rt
Specificity	MYH-pan Polyclonal Antibody detects endogenous levels of MYH-pan protein only when non-acetylation at K1394.
Immunogen Type	peptide
Immunogen Description	Synthesized peptide derived from human MYH-pan around the non-acetylation site of K1394.
Target Name	MYH-pan
Other Names	MYH1; Myosin-1; Myosin heavy chain 1; Myosin heavy chain 2x; MyHC-2x; Myosin heavy chain IIx/d; MyHC-IIx/d; Myosin heavy chain, skeletal muscle, adult 1; MYH2; MYHSA2; Myosin-2; Myosin heavy chain 2
Accession No.	Swiss-Prot: P12882/Q9UKX2/P11055/Q9Y623/P13533/P12883/P13535NCBI Gene ID: 4619/4620/4621/5795/4624/4625/4626
Uniprot	P12882
GeneID	4619;
SDS-PAGE MW	225kd
Concentration	1mg/ml
Formulation	Liquid in PBS containing 50% glycerol, 0.5% BSA and 0.02% sodium azide.
Storage	Store at -20°C/1 year

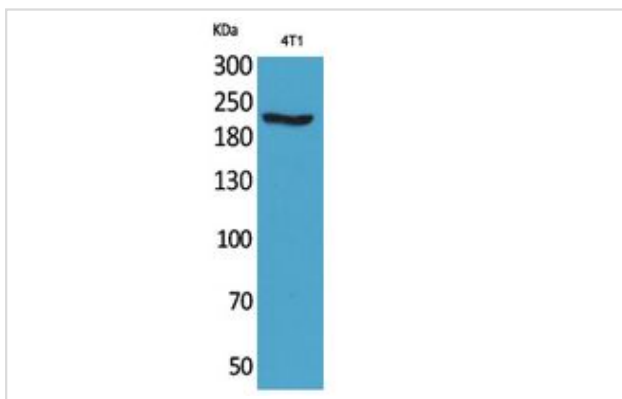
## Application Details

Western Blot: 1/500 - 1/2000.

ELISA: 1/20000.

Not yet tested in other applications.

## Images



Western Blot analysis of 4T1 cells using MYH-pan Polyclonal Antibody.

---

Note: This product is for in vitro research use only