

PCAF Polyclonal Antibody

Catalog No: #41809

Package Size: #41809-1 50ul #41809-2 100ul

Orders: order@signalwayantibody.comSupport: tech@signalwayantibody.com

Description

Product Name	PCAF Polyclonal Antibody
Host Species	Rabbit
Clonality	Polyclonal
Purification	The antibody was affinity-purified from rabbit antiserum by affinity-chromatography using epitope-specific immunogen.
Applications	WB ELISA
Species Reactivity	Hu Ms
Specificity	PCAF Polyclonal Antibody detects endogenous levels of PCAF protein only when non-acetylation at K428.
Immunogen Type	peptide
Immunogen Description	Synthesized peptide derived from human PCAF around the non-acetylation site of K428.
Target Name	PCAF
Other Names	KAT2B; PCAF; Histone acetyltransferase KAT2B; Histone acetyltransferase PCAF; Histone acetylase PCAF; Lysine acetyltransferase 2B; P300/CBP-associated factor; P/CAF
Accession No.	Swiss-Prot: Q92831NCBI Gene ID: 8850
Uniprot	Q92831
GeneID	8850;
SDS-PAGE MW	93kd
Concentration	1mg/ml
Formulation	Liquid in PBS containing 50% glycerol, 0.5% BSA and 0.02% sodium azide.
Storage	Store at -20°C/1 year

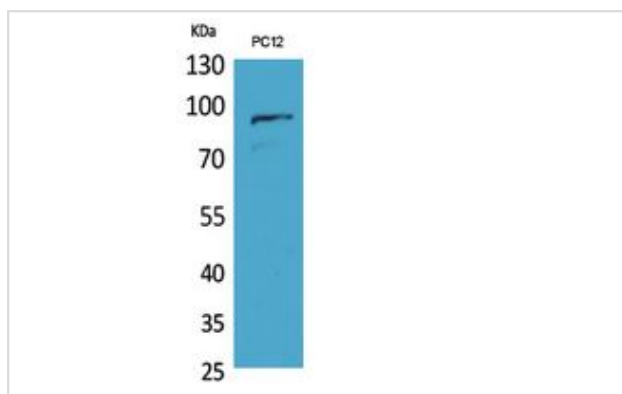
Application Details

Western Blot: 1/500 - 1/2000.

ELISA: 1/20000.

Not yet tested in other applications.

Images



Western Blot analysis of PC12 cells using PCAF Polyclonal Antibody.

Note: This product is for in vitro research use only