

IL-12A p35 Polyclonal Antibody

Catalog No: #41819

Package Size: #41819-1 50ul #41819-2 100ul

Orders: order@signalwayantibody.comSupport: tech@signalwayantibody.com

Description

Product Name	IL-12A p35 Polyclonal Antibody
Host Species	Rabbit
Clonality	Polyclonal
Purification	The antibody was affinity-purified from rabbit antiserum by affinity-chromatography using epitope-specific immunogen.
Applications	WB ELISA
Species Reactivity	Hu
Specificity	IL-12A p35 Polyclonal Antibody detects endogenous levels of IL-12A p35 protein.
Immunogen Type	peptide
Immunogen Description	Synthesized peptide derived from the Internal region of human IL-12A p35.
Target Name	IL-12A p35
Other Names	IL12A; NKSF1; Interleukin-12 subunit alpha; IL-12A; Cytotoxic lymphocyte maturation factor 35 kDa subunit; CLMF p35; IL-12 subunit p35; NK cell stimulatory factor chain 1; NKSF1
Accession No.	Swiss-Prot: P29459NCBI Gene ID: 3592
Uniprot	P29459
GeneID	3592;
SDS-PAGE MW	35kd
Concentration	1mg/ml
Formulation	Liquid in PBS containing 50% glycerol, 0.5% BSA and 0.02% sodium azide.
Storage	Store at -20°C/1 year

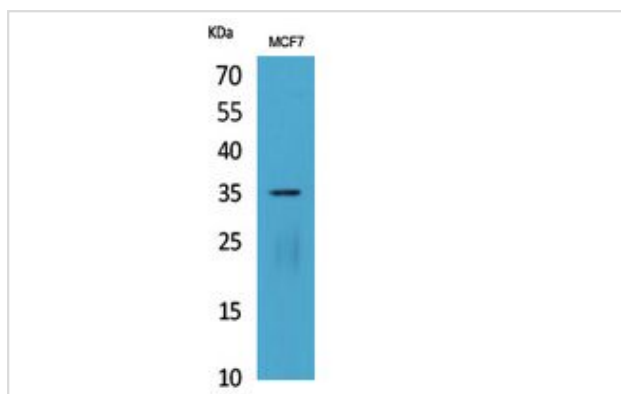
Application Details

Western Blot: 1/500 - 1/2000.

ELISA: 1/20000.

Not yet tested in other applications.

Images



Western Blot analysis of MCF7 cells using IL-12A p35 Polyclonal Antibody.

Note: This product is for in vitro research use only