

FOXP3 Polyclonal Antibody

Catalog No: #41822

Package Size: #41822-1 50ul #41822-2 100ul

Orders: order@signalwayantibody.comSupport: tech@signalwayantibody.com

Description

Product Name	FOXP3 Polyclonal Antibody
Host Species	Rabbit
Clonality	Polyclonal
Purification	The antibody was affinity-purified from rabbit antiserum by affinity-chromatography using epitope-specific immunogen.
Applications	WB ELISA IHC IF
Species Reactivity	Hu Ms Rt
Specificity	FOXP3 Polyclonal Antibody detects endogenous levels of FOXP3 protein.
Immunogen Description	Synthesized peptide derived from the C-terminal region of human FOXP3.
Target Name	FOXP3
Other Names	FOXP3; IPEX; JM2; Forkhead box protein P3; Scurfin
Accession No.	Swiss-Prot: Q9BZS1 NCBI Gene ID: 50943
Uniprot	Q9BZS1
GeneID	50943;
SDS-PAGE MW	47kd
Concentration	1mg/ml
Formulation	Liquid in PBS containing 50% glycerol, 0.5% BSA and 0.02% sodium azide.
Storage	Store at -20°C/1 year

Application Details

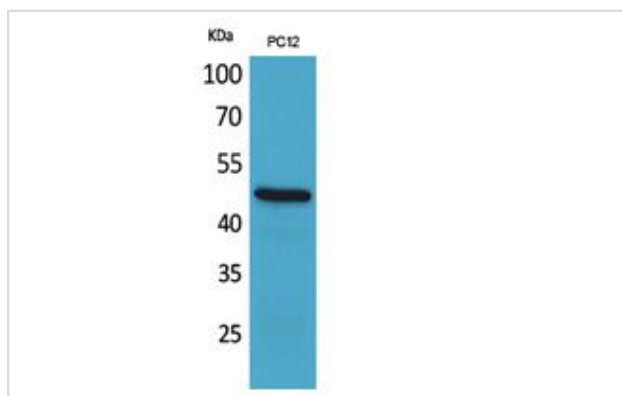
Western Blot: 1/500 - 1/2000.

ELISA: 1/20000.

Not yet tested in other applications.

IHC: 1/100-1/300

Images



Western Blot analysis of PC12 cells using FOXP3 Polyclonal Antibody.

Note: This product is for in vitro research use only