

PRX I Polyclonal Antibody

Catalog No: #41828

Package Size: #41828-1 50ul #41828-2 100ul

Orders: order@signalwayantibody.comSupport: tech@signalwayantibody.com

Description

| | |
|-----------------------|---|
| Product Name | PRX I Polyclonal Antibody |
| Host Species | Rabbit |
| Clonality | Polyclonal |
| Purification | The antibody was affinity-purified from rabbit antiserum by affinity-chromatography using epitope-specific immunogen. |
| Applications | WB ELISA |
| Species Reactivity | Hu Ms Rt |
| Specificity | PRX I Polyclonal Antibody detects endogenous levels of PRX I protein. |
| Immunogen Type | peptide |
| Immunogen Description | Synthesized peptide derived from the Internal region of human PRX I. |
| Target Name | PRX I |
| Other Names | PRDX1; PAGA; PAGB; TDPX2; Peroxiredoxin-1; Natural killer cell-enhancing factor A; NKEF-A; Proliferation-associated gene protein; PAG; Thioredoxin peroxidase 2; Thioredoxin-dependent peroxide reductase 2 |
| Accession No. | Swiss-Prot: Q06830NCBI Gene ID: 5052 |
| Uniprot | Q06830 |
| GeneID | 5052; |
| SDS-PAGE MW | 21kd |
| Concentration | 1mg/ml |
| Formulation | Liquid in PBS containing 50% glycerol, 0.5% BSA and 0.02% sodium azide. |
| Storage | Store at -20°C/1 year |

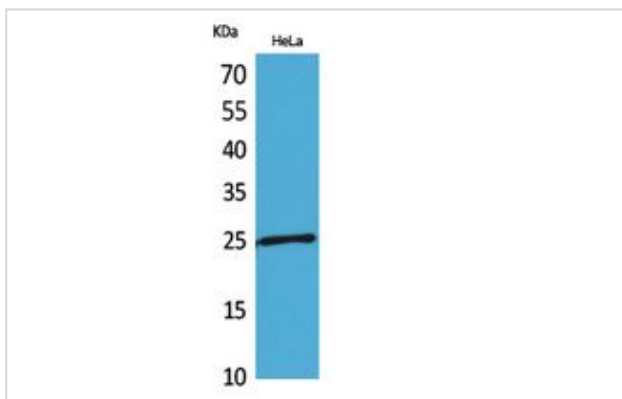
Application Details

Western Blot: 1/500 - 1/2000.

ELISA: 1/20000.

Not yet tested in other applications.

Images



Western Blot analysis of HeLa cells using PRX I Polyclonal Antibody.

Note: This product is for in vitro research use only