

CD3- δ Polyclonal Antibody

Catalog No: #41831

Package Size: #41831-1 50ul #41831-2 100ul

Orders: order@signalwayantibody.com

Support: tech@signalwayantibody.com

Description

Product Name	CD3- δ Polyclonal Antibody
Host Species	Rabbit
Clonality	Polyclonal
Purification	The antibody was affinity-purified from rabbit antiserum by affinity-chromatography using epitope-specific immunogen.
Applications	WB ELISA
Species Reactivity	Hu
Specificity	CD3- δ Polyclonal Antibody detects endogenous levels of CD3- δ protein.
Immunogen Type	peptide
Immunogen Description	Synthesized peptide derived from the Internal region of human CD3- δ .
Target Name	CD3- δ
Other Names	CD3D; T3D; T-cell surface glycoprotein CD3 delta chain; T-cell receptor T3 delta chain; CD3d
Accession No.	Swiss-Prot: P04234NCBI Gene ID: 915
Uniprot	P04234
GeneID	915;
SDS-PAGE MW	18kd
Concentration	1mg/ml
Formulation	Liquid in PBS containing 50% glycerol, 0.5% BSA and 0.02% sodium azide.
Storage	Store at -20°C/1 year

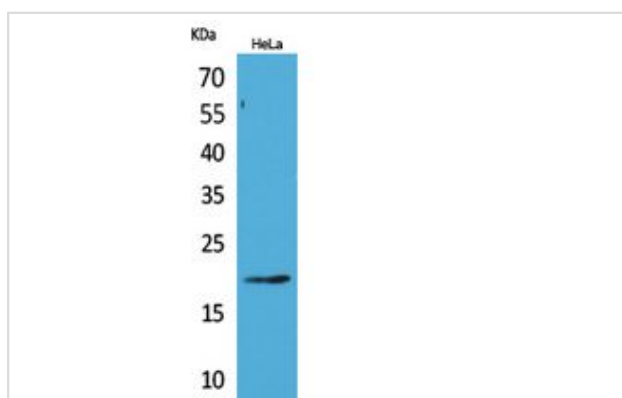
Application Details

Western Blot: 1/500 - 1/2000.

ELISA: 1/20000.

Not yet tested in other applications.

Images

Western Blot analysis of HeLa cells using CD3- δ Polyclonal Antibody.

Note: This product is for in vitro research use only