

CD3-ε Polyclonal Antibody

Catalog No: #41832

Package Size: #41832-1 50ul #41832-2 100ul

Orders: order@signalwayantibody.comSupport: tech@signalwayantibody.com

Description

| | |
|-----------------------|---|
| Product Name | CD3-ε Polyclonal Antibody |
| Host Species | Rabbit |
| Clonality | Polyclonal |
| Purification | The antibody was affinity-purified from rabbit antiserum by affinity-chromatography using epitope-specific immunogen. |
| Applications | WB ELISA |
| Species Reactivity | Hu |
| Specificity | CD3-ε Polyclonal Antibody detects endogenous levels of CD3-ε protein. |
| Immunogen Type | peptide |
| Immunogen Description | Synthesized peptide derived from the Internal region of human CD3-ε. |
| Target Name | CD3-ε |
| Other Names | CD3E; T3E; T-cell surface glycoprotein CD3 epsilon chain; T-cell surface antigen T3/Leu-4 epsilon chain; CD3e |
| Accession No. | Swiss-Prot: P07766NCBI Gene ID: 916 |
| Uniprot | P07766 |
| GeneID | 916; |
| SDS-PAGE MW | 23kd |
| Concentration | 1mg/ml |
| Formulation | Liquid in PBS containing 50% glycerol, 0.5% BSA and 0.02% sodium azide. |
| Storage | Store at -20°C/1 year |

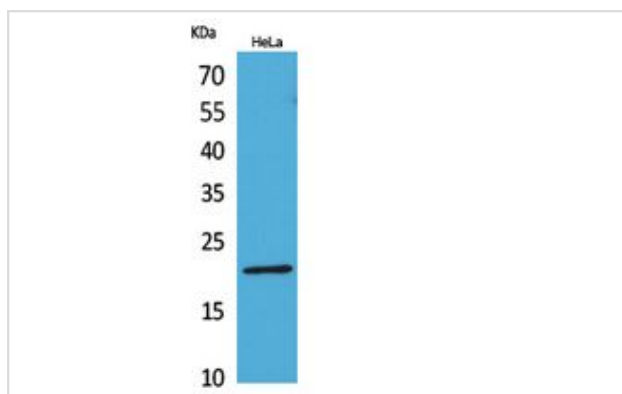
Application Details

Western Blot: 1/500 - 1/2000.

ELISA: 1/20000.

Not yet tested in other applications.

Images



Western Blot analysis of HeLa cells using CD3-ε Polyclonal Antibody.

Note: This product is for in vitro research use only