

## CD85f Polyclonal Antibody

Catalog No: #41837

Package Size: #41837-1 50ul #41837-2 100ul

Orders: [order@signalwayantibody.com](mailto:order@signalwayantibody.com)Support: [tech@signalwayantibody.com](mailto:tech@signalwayantibody.com)

## Description

Product Name	CD85f Polyclonal Antibody
Host Species	Rabbit
Clonality	Polyclonal
Purification	The antibody was affinity-purified from rabbit antiserum by affinity-chromatography using epitope-specific immunogen.
Applications	WB ELISA
Species Reactivity	Hu
Specificity	CD85f Polyclonal Antibody detects endogenous levels of CD85f protein.
Immunogen Type	peptide
Immunogen Description	Synthesized peptide derived from the Internal region of human CD85f.
Target Name	CD85f
Other Names	LILRA5; ILT11; LILRB7; LIR9; Leukocyte immunoglobulin-like receptor subfamily A member 5; CD85 antigen-like family member F; Immunoglobulin-like transcript 11; ILT-11; Leukocyte immunoglobulin-like receptor 9; LIR-9; CD85f
Accession No.	Swiss-Prot: A6NI73NCBI Gene ID: 353514
Uniprot	A6NI73
GeneID	353514;
SDS-PAGE MW	33kd
Concentration	1mg/ml
Formulation	Liquid in PBS containing 50% glycerol, 0.5% BSA and 0.02% sodium azide.
Storage	Store at -20°C/1 year

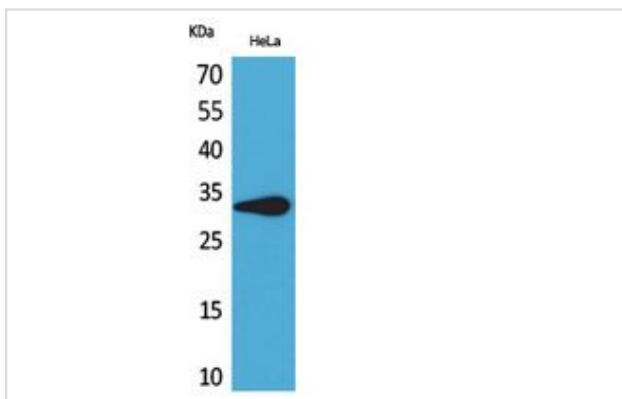
## Application Details

Western Blot: 1/500 - 1/2000.

ELISA: 1/20000.

Not yet tested in other applications.

## Images



Western Blot analysis of HeLa cells using CD85f Polyclonal Antibody.

---

Note: This product is for in vitro research use only