

## CD110 Polyclonal Antibody

Catalog No: #41841

Package Size: #41841-1 50ul #41841-2 100ul

Orders: [order@signalwayantibody.com](mailto:order@signalwayantibody.com)Support: [tech@signalwayantibody.com](mailto:tech@signalwayantibody.com)

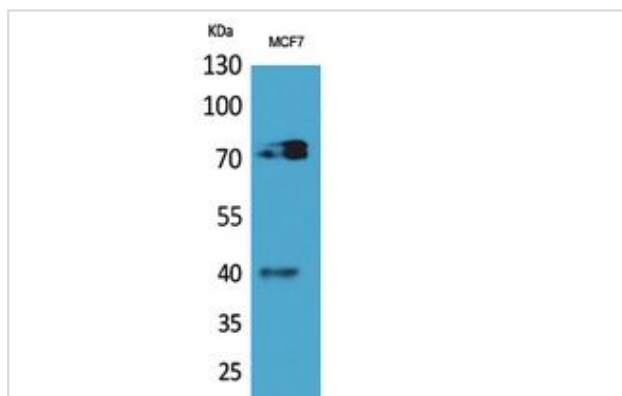
## Description

Product Name	CD110 Polyclonal Antibody
Host Species	Rabbit
Clonality	Polyclonal
Purification	The antibody was affinity-purified from rabbit antiserum by affinity-chromatography using epitope-specific immunogen.
Applications	WB
Species Reactivity	Hu Ms Rt
Specificity	CD110 Polyclonal Antibody detects endogenous levels of CD110 protein.
Immunogen Type	peptide
Immunogen Description	Synthesized peptide derived from the Internal region of human CD110.
Target Name	CD110
Other Names	MPL; TPOR; Thrombopoietin receptor; TPO-R; Myeloproliferative leukemia protein; Proto-oncogene c-Mpl; CD110
Accession No.	Swiss-Prot: P40238NCBI Gene ID: 4352
Uniprot	P40238
GeneID	4352;
SDS-PAGE MW	69kd
Concentration	1mg/ml
Formulation	Liquid in PBS containing 50% glycerol, 0.5% BSA and 0.02% sodium azide.
Storage	Store at -20°C/1 year

## Application Details

Western Blot: 1/500 - 1/2000.

## Images



Western Blot analysis of MCF7 cells using CD110 Polyclonal Antibody.

---

Note: This product is for in vitro research use only