

FBXL12 antibody

Catalog No: #22707



Orders: [order@signalwayantibody.com](mailto:order@signalwayantibody.com)  
Support: [tech@signalwayantibody.com](mailto:tech@signalwayantibody.com)

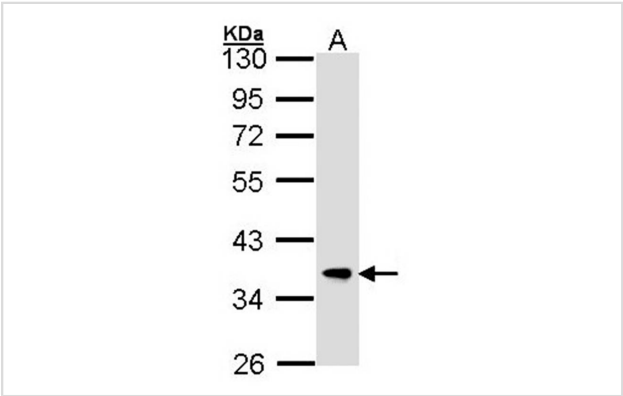
Description

Product Name	FBXL12 antibody
Host Species	Rabbit
Clonality	Polyclonal
Purification	Purified by antigen-affinity chromatography.
Applications	WB IHC
Species Reactivity	Hu Ms
Immunogen Type	Peptide
Immunogen Description	Synthetic peptide contain a sequence corresponding to a region within amino acids 265 and 326 of FBXL12
Target Name	FBXL12
Accession No.	Swiss-Prot:Q9NXK8Gene ID:54850
Uniprot	Q9NXK8
GeneID	54850;
Concentration	1mg/ml
Formulation	Supplied in 1XPBS, 10% Glycerol (pH7.0). 0.01% Thimerosal was added as a preservative.
Storage	Store at -20°C for long term preservation (recommended). Store at 4°C for short term use.

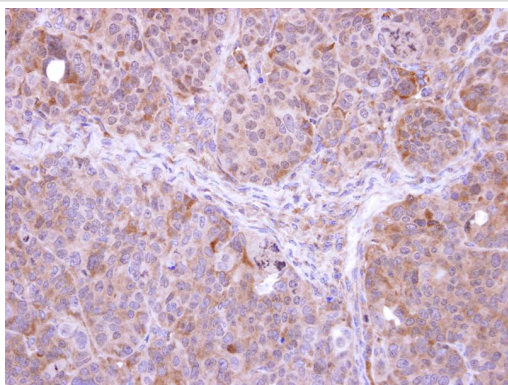
Application Details

Predicted MW: 37kd
Western blotting: 1:500-1:3000
Immunohistochemistry: 1:50-1:500

Images



Sample (30 ug of whole cell lysate)  
A: Hep G2  
10% SDS PAGE  
Primary antibody diluted at 1: 1000



Immunohistochemical analysis of paraffin-embedded SW480 xenograft, using FBXL12 antibody at 1: 500 dilution.

## Background

Members of the F-box protein family, such as FBXL12, are characterized by an approximately 40-amino acid F-box motif. SCF complexes, formed by SKP1 (MIM 601434), cullin (see CUL1; MIM 603134), and F-box proteins, act as protein-ubiquitin ligases. F-box proteins interact with SKP1 through the F box, and they interact with ubiquitination targets through other protein interaction domains (Jin et al., 2004 [PubMed 15520277]).[supplied by OMIM]

Note: This product is for in vitro research use only