

CD239 Polyclonal Antibody

Catalog No: #41848

Package Size: #41848-1 50ul #41848-2 100ul

Orders: order@signalwayantibody.comSupport: tech@signalwayantibody.com

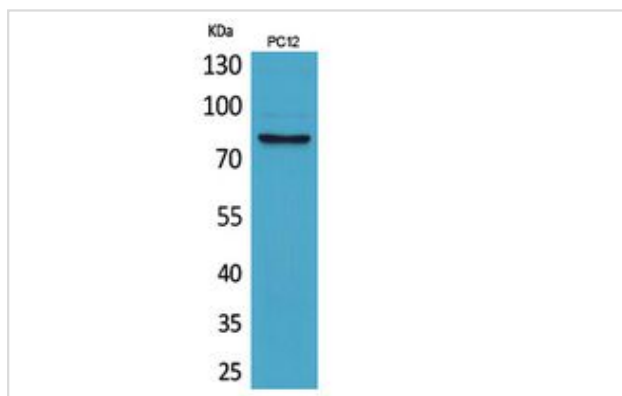
Description

Product Name	CD239 Polyclonal Antibody
Host Species	Rabbit
Clonality	Polyclonal
Purification	The antibody was affinity-purified from rabbit antiserum by affinity-chromatography using epitope-specific immunogen.
Applications	WB
Species Reactivity	Hu Ms Rt
Specificity	CD239 Polyclonal Antibody detects endogenous levels of CD239 protein.
Immunogen Type	peptide
Immunogen Description	Synthesized peptide derived from the Internal region of human CD239.
Target Name	CD239
Other Names	BCAM; LU; MSK19; Basal cell adhesion molecule; Auberger B antigen; B-CAM cell surface glycoprotein; F8/G253 antigen; Lutheran antigen; Lutheran blood group glycoprotein; CD239
Accession No.	Swiss-Prot: P50895NCBI Gene ID: 4059
Uniprot	P50895
GeneID	4059;
SDS-PAGE MW	78kd
Concentration	1mg/ml
Formulation	Liquid in PBS containing 50% glycerol, 0.5% BSA and 0.02% sodium azide.
Storage	Store at -20°C/1 year

Application Details

Western Blot: 1/500 - 1/2000.

Images



Western Blot analysis of PC12 cells using CD239 Polyclonal Antibody.

Note: This product is for in vitro research use only