

## JAM-A Polyclonal Antibody

Catalog No: #41850

Package Size: #41850-1 50ul #41850-2 100ul

Orders: [order@signalwayantibody.com](mailto:order@signalwayantibody.com)Support: [tech@signalwayantibody.com](mailto:tech@signalwayantibody.com)

## Description

Product Name	JAM-A Polyclonal Antibody
Host Species	Rabbit
Clonality	Polyclonal
Purification	The antibody was affinity-purified from rabbit antiserum by affinity-chromatography using epitope-specific immunogen.
Applications	WB ELISA
Species Reactivity	Hu Rt
Specificity	JAM-A Polyclonal Antibody detects endogenous levels of JAM-A protein.
Immunogen Type	peptide
Immunogen Description	Synthesized peptide derived from the Internal region of human JAM-A.
Target Name	JAM-A
Other Names	F11R; JAM1; JCAM; Junctional adhesion molecule A; JAM-A; Junctional adhesion molecule 1; JAM-1; Platelet F11 receptor; Platelet adhesion molecule 1; PAM-1; CD321
Accession No.	Swiss-Prot: Q9Y624NCBI Gene ID: 50848
Uniprot	Q9Y624
GeneID	50848;
SDS-PAGE MW	32kd
Concentration	1mg/ml
Formulation	Liquid in PBS containing 50% glycerol, 0.5% BSA and 0.02% sodium azide.
Storage	Store at -20°C/1 year

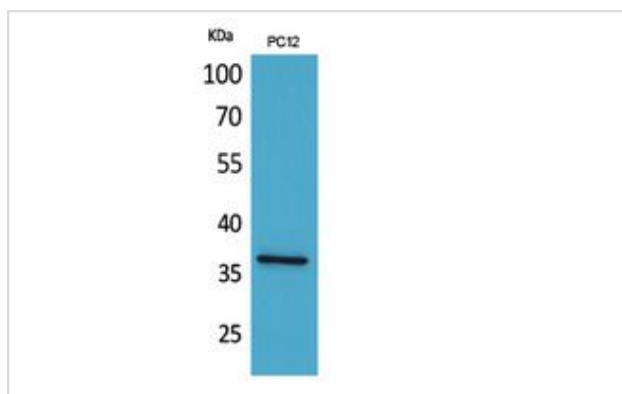
## Application Details

Western Blot: 1/500 - 1/2000.

ELISA: 1/20000.

Not yet tested in other applications.

## Images



Western Blot analysis of PC12 cells using JAM-A Polyclonal Antibody.

---

Note: This product is for in vitro research use only