

CD223 Polyclonal Antibody

Catalog No: #41851

Package Size: #41851-1 50ul #41851-2 100ul

Orders: order@signalwayantibody.comSupport: tech@signalwayantibody.com

Description

Product Name	CD223 Polyclonal Antibody
Host Species	Rabbit
Clonality	Polyclonal
Purification	The antibody was affinity-purified from rabbit antiserum by affinity-chromatography using epitope-specific immunogen.
Applications	WB ELISA
Species Reactivity	Hu
Specificity	CD223 Polyclonal Antibody detects endogenous levels of CD223 protein.
Immunogen Type	peptide
Immunogen Description	Synthesized peptide derived from the Internal region of human CD223.
Target Name	CD223
Other Names	LAG3; FDC; Lymphocyte activation gene 3 protein; LAG-3; Protein FDC; CD223
Accession No.	Swiss-Prot: P18627NCBI Gene ID: 3902
Uniprot	P18627
GeneID	3902;
SDS-PAGE MW	57kd
Concentration	1mg/ml
Formulation	Liquid in PBS containing 50% glycerol, 0.5% BSA and 0.02% sodium azide.
Storage	Store at -20°C/1 year

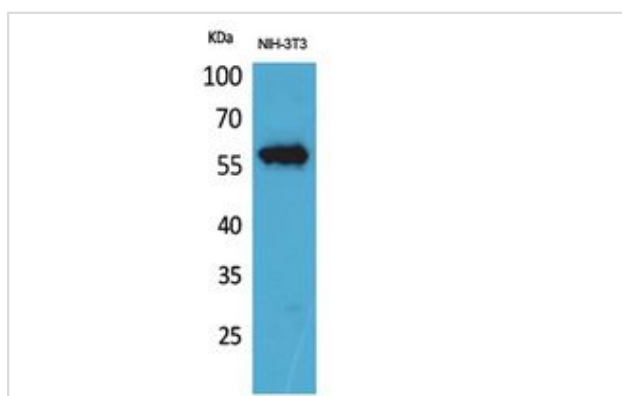
Application Details

Western Blot: 1/500 - 1/2000.

ELISA: 1/20000.

Not yet tested in other applications.

Images



Western Blot analysis of NIH-3T3 cells using CD223 Polyclonal Antibody.

Note: This product is for in vitro research use only