

## CMTM5 Polyclonal Antibody

Catalog No: #41856

Package Size: #41856-1 50ul #41856-2 100ul

Orders: order@signalwayantibody.com

Support: tech@signalwayantibody.com

## Description

Product Name	CMTM5 Polyclonal Antibody
Host Species	Rabbit
Clonality	Polyclonal
Purification	The antibody was affinity-purified from rabbit antiserum by affinity-chromatography using epitope-specific immunogen.
Applications	WB ELISA
Species Reactivity	Hu
Specificity	CMTM5 Polyclonal Antibody detects endogenous levels of CMTM5 protein.
Immunogen Type	peptide
Immunogen Description	Synthesized peptide derived from the N-terminal region of human CMTM5.
Target Name	CMTM5
Other Names	CMTM5; CKLFSF5; CKLF-like MARVEL transmembrane domain-containing protein 5; Chemokine-like factor superfamily member 5
Accession No.	Swiss-Prot: Q96DZ9NCBI Gene ID: 116173
Uniprot	Q96DZ9
GeneID	116173;
SDS-PAGE MW	25kd
Concentration	1mg/ml
Formulation	Liquid in PBS containing 50% glycerol, 0.5% BSA and 0.02% sodium azide.
Storage	Store at -20°C/1 year

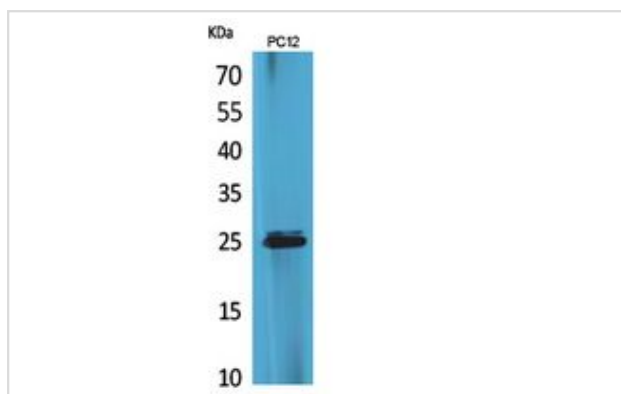
## Application Details

Western Blot: 1/500 - 1/2000.

ELISA: 1/20000.

Not yet tested in other applications.

## Images



Western Blot analysis of PC12 cells using CMTM5 Polyclonal Antibody.

---

Note: This product is for in vitro research use only