

## CRF-RI Polyclonal Antibody

Catalog No: #41861

Package Size: #41861-1 50ul #41861-2 100ul

Orders: [order@signalwayantibody.com](mailto:order@signalwayantibody.com)Support: [tech@signalwayantibody.com](mailto:tech@signalwayantibody.com)

## Description

Product Name	CRF-RI Polyclonal Antibody
Host Species	Rabbit
Clonality	Polyclonal
Purification	The antibody was affinity-purified from rabbit antiserum by affinity-chromatography using epitope-specific immunogen.
Applications	WB ELISA
Species Reactivity	Hu Ms Rt
Specificity	CRF-RI Polyclonal Antibody detects endogenous levels of CRF-RI protein.
Immunogen Type	peptide
Immunogen Description	Synthesized peptide derived from the Internal region of human CRF-RI.
Target Name	CRF-RI
Other Names	CRHR1; CRFR; CRFR1; CRHR; Corticotropin-releasing factor receptor 1; CRF-R-1; CRF-R1; CRFR-1; Corticotropin-releasing hormone receptor 1; CRH-R-1; CRH-R1
Accession No.	Swiss-Prot: P34998NCBI Gene ID: 1394
Uniprot	P34998
GeneID	104909134;1394;
SDS-PAGE MW	50kd
Concentration	1mg/ml
Formulation	Liquid in PBS containing 50% glycerol, 0.5% BSA and 0.02% sodium azide.
Storage	Store at -20°C/1 year

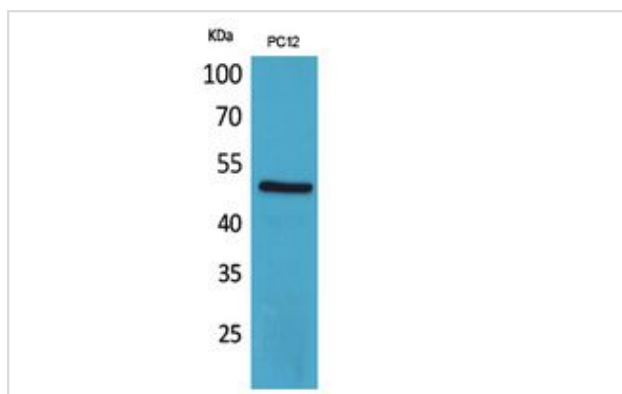
## Application Details

Western Blot: 1/500 - 1/2000.

ELISA: 1/20000.

Not yet tested in other applications.

## Images



Western Blot analysis of PC12 cells using CRF-RI Polyclonal Antibody.

---

Note: This product is for in vitro research use only