

CD85c Polyclonal Antibody

Catalog No: #41880

Package Size: #41880-1 50ul #41880-2 100ul

Orders: order@signalwayantibody.com

Support: tech@signalwayantibody.com

Description

| | |
|-----------------------|--|
| Product Name | CD85c Polyclonal Antibody |
| Host Species | Rabbit |
| Clonality | Polyclonal |
| Purification | The antibody was affinity-purified from rabbit antiserum by affinity-chromatography using epitope-specific immunogen. |
| Applications | WB ELISA |
| Species Reactivity | Hu |
| Specificity | CD85c Polyclonal Antibody detects endogenous levels of CD85c protein. |
| Immunogen Type | peptide |
| Immunogen Description | Synthesized peptide derived from the N-terminal region of human CD85c. |
| Target Name | CD85c |
| Other Names | LILRB5; LIR8; Leukocyte immunoglobulin-like receptor subfamily B member 5; CD85 antigen-like family member C; Leukocyte immunoglobulin-like receptor 8; LIR-8; CD85c |
| Accession No. | Swiss-Prot: O75023NCBI Gene ID: 10990 |
| Uniprot | O75023 |
| GeneID | 10990; |
| SDS-PAGE MW | 65kd |
| Concentration | 1mg/ml |
| Formulation | Liquid in PBS containing 50% glycerol, 0.5% BSA and 0.02% sodium azide. |
| Storage | Store at -20°C/1 year |

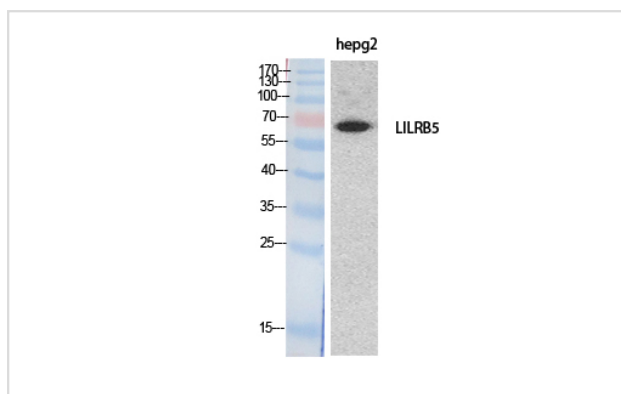
Application Details

Western Blot: 1/500 - 1/2000.

ELISA: 1/20000.

Not yet tested in other applications.

Images



Western Blot analysis of HepG2 cells using CD85c Polyclonal Antibody

Note: This product is for in vitro research use only