

TERT Polyclonal Antibody

Catalog No: #41884

Package Size: #41884-1 50ul #41884-2 100ul

Orders: order@signalwayantibody.com

Support: tech@signalwayantibody.com

Description

Product Name	TERT Polyclonal Antibody
Host Species	Rabbit
Clonality	Polyclonal
Purification	The antibody was affinity-purified from rabbit antiserum by affinity-chromatography using epitope-specific immunogen.
Applications	WB ELISA
Species Reactivity	Hu
Specificity	TERT Polyclonal Antibody detects endogenous levels of TERT protein.
Immunogen Type	peptide
Immunogen Description	Synthesized peptide derived from the C-terminal region of human TERT.
Target Name	TERT
Other Names	TERT; EST2; TCS1; TRT; Telomerase reverse transcriptase; HEST2; Telomerase catalytic subunit; Telomerase-associated protein 2; TP2
Accession No.	Swiss-Prot: O14746NCBI Gene ID: 7015
Uniprot	O14746
GeneID	7015;
SDS-PAGE MW	130kd
Concentration	1mg/ml
Formulation	Liquid in PBS containing 50% glycerol, 0.5% BSA and 0.02% sodium azide.
Storage	Store at -20°C/1 year

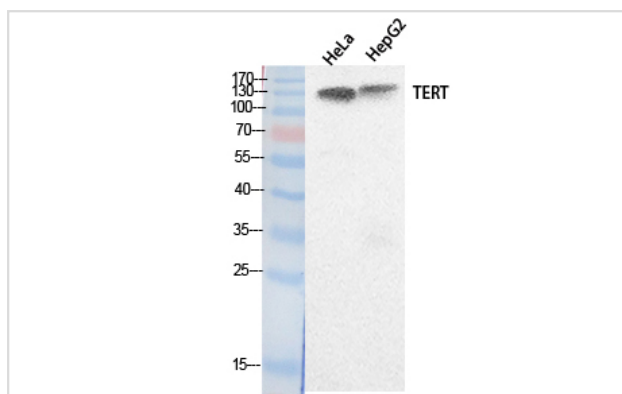
Application Details

Western Blot: 1/500 - 1/2000.

ELISA: 1/20000.

Not yet tested in other applications.

Images



Western Blot analysis of HeLa HepG2 cells using TERT Polyclonal Antibody

Note: This product is for in vitro research use only