

Glut4 Polyclonal Antibody

Catalog No: #41893

Package Size: #41893-1 50ul #41893-2 100ul

Orders: order@signalwayantibody.com

Support: tech@signalwayantibody.com

Description

Product Name	Glut4 Polyclonal Antibody
Host Species	Rabbit
Clonality	Polyclonal
Purification	The antibody was affinity-purified from rabbit antiserum by affinity-chromatography using epitope-specific immunogen.
Applications	WB ELISA
Species Reactivity	Hu Ms Rt
Specificity	Glut4 Polyclonal Antibody detects endogenous levels of Glut4 protein.
Immunogen Type	peptide
Immunogen Description	Synthesized peptide derived from the N-terminal region of human Glut4.
Target Name	Glut4
Other Names	SLC2A4; GLUT4; Solute carrier family 2, facilitated glucose transporter member 4; Glucose transporter type 4, insulin-responsive; GLUT-4
Accession No.	Swiss-Prot: P14672NCBI Gene ID: 6517
Uniprot	P14672
GeneID	6517;
SDS-PAGE MW	56kd
Concentration	1mg/ml
Formulation	Liquid in PBS containing 50% glycerol, 0.5% BSA and 0.02% sodium azide.
Storage	Store at -20°C/1 year

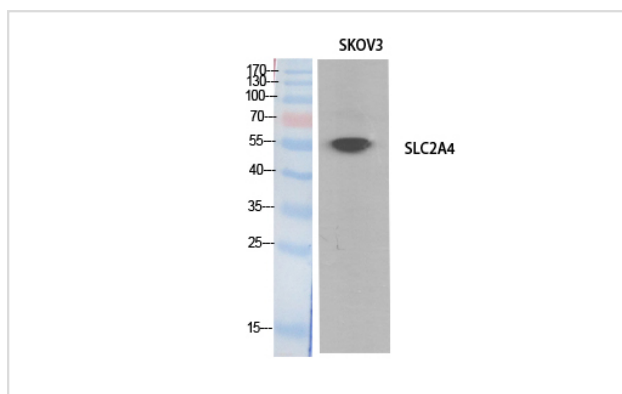
Application Details

Western Blot: 1/500 - 1/2000.

ELISA: 1/20000.

Not yet tested in other applications.

Images



Western Blot analysis of SKOV3 cells using Glut4 Polyclonal Antibody

Note: This product is for in vitro research use only