

COL5A2 Polyclonal Antibody

Catalog No: #41901

Package Size: #41901-1 50ul #41901-2 100ul

Orders: order@signalwayantibody.com

Support: tech@signalwayantibody.com

Description

Product Name	COL5A2 Polyclonal Antibody
Host Species	Rabbit
Clonality	Polyclonal
Purification	The antibody was affinity-purified from rabbit antiserum by affinity-chromatography using epitope-specific immunogen.
Applications	WB ELISA
Species Reactivity	Hu
Specificity	COL5A2 Polyclonal Antibody detects endogenous levels of COL5A2 protein.
Immunogen Type	peptide
Immunogen Description	Synthesized peptide derived from the N-terminal region of human COL5A2.
Target Name	COL5A2
Other Names	COL5A2; Collagen alpha-2(V) chain
Accession No.	Swiss-Prot: P05997NCBI Gene ID: 1290
Uniprot	P05997
GeneID	1290;
SDS-PAGE MW	145kd
Concentration	1mg/ml
Formulation	Liquid in PBS containing 50% glycerol, 0.5% BSA and 0.02% sodium azide.
Storage	Store at -20°C/1 year

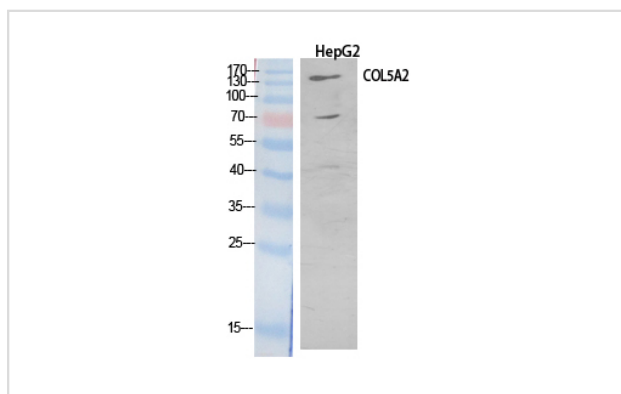
Application Details

Western Blot: 1/500 - 1/2000.

ELISA: 1/20000.

Not yet tested in other applications.

Images



Western Blot analysis of HepG2 cells using COL5A2 Polyclonal Antibody

Note: This product is for in vitro research use only