

FGF-2 Polyclonal Antibody

Catalog No: #41915

Package Size: #41915-1 50ul #41915-2 100ul

Orders: order@signalwayantibody.com

Support: tech@signalwayantibody.com

Description

| | |
|-----------------------|--|
| Product Name | FGF-2 Polyclonal Antibody |
| Host Species | Rabbit |
| Clonality | Polyclonal |
| Purification | The antibody was affinity-purified from rabbit antiserum by affinity-chromatography using epitope-specific immunogen. |
| Applications | WB ELISA |
| Species Reactivity | Hu Ms Rt |
| Specificity | FGF-2 Polyclonal Antibody detects endogenous levels of FGF-2 protein. |
| Immunogen Type | peptide |
| Immunogen Description | Synthesized peptide derived from the Internal region of human FGF-2. |
| Target Name | FGF-2 |
| Other Names | FGF2; FGFB; Fibroblast growth factor 2; FGF-2; Basic fibroblast growth factor; bFGF; Heparin-binding growth factor 2; HBGF-2 |
| Accession No. | Swiss-Prot: P09038NCBI Gene ID: 2247 |
| Uniprot | P09038 |
| GeneID | 2247; |
| SDS-PAGE MW | 30kd |
| Concentration | 1mg/ml |
| Formulation | Liquid in PBS containing 50% glycerol, 0.5% BSA and 0.02% sodium azide. |
| Storage | Store at -20°C/1 year |

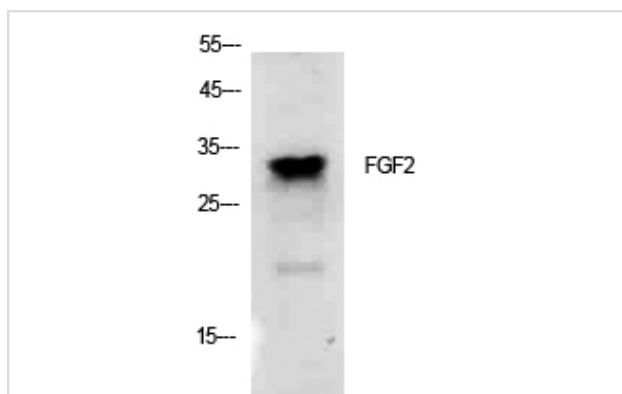
Application Details

Western Blot: 1/500 - 1/2000.

ELISA: 1/10000.

Not yet tested in other applications.

Images



Western Blot analysis of K562 cells using FGF-2 Polyclonal Antibody.

Note: This product is for in vitro research use only