

M-CSF Polyclonal Antibody

Catalog No: #41919

Package Size: #41919-1 50ul #41919-2 100ul

Orders: order@signalwayantibody.com

Support: tech@signalwayantibody.com

Description

Product Name	M-CSF Polyclonal Antibody
Host Species	Rabbit
Clonality	Polyclonal
Purification	The antibody was affinity-purified from rabbit antiserum by affinity-chromatography using epitope-specific immunogen.
Applications	WB ELISA
Species Reactivity	Hu
Specificity	M-CSF Polyclonal Antibody detects endogenous levels of M-CSF protein.
Immunogen Type	peptide
Immunogen Description	Synthesized peptide derived from the C-terminal region of human M-CSF.
Target Name	M-CSF
Other Names	CSF1; Macrophage colony-stimulating factor 1; CSF-1; M-CSF; MCSF; Lanimostim
Accession No.	Swiss-Prot: P09603NCBI Gene ID: 1435
Uniprot	P09603
GeneID	1435;
SDS-PAGE MW	48kd
Concentration	1mg/ml
Formulation	Liquid in PBS containing 50% glycerol, 0.5% BSA and 0.02% sodium azide.
Storage	Store at -20°C/1 year

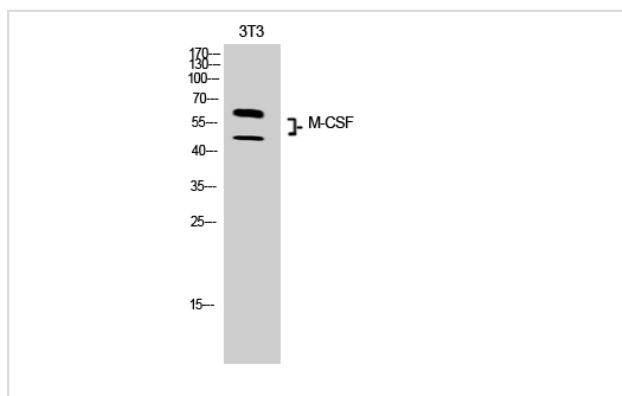
Application Details

Western Blot: 1/500 - 1/2000.

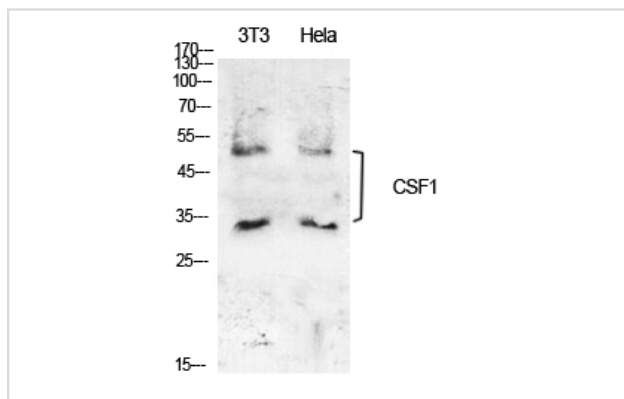
ELISA: 1/10000.

Not yet tested in other applications.

Images



Western Blot analysis of 3T3 cells using M-CSF Polyclonal Antibody



Western Blot analysis of NIH-3T3 HeLa cells using M-CSF Polyclonal Antibody

Note: This product is for in vitro research use only