

## EP-CAM Polyclonal Antibody

Catalog No: #41922

Package Size: #41922-1 50ul #41922-2 100ul

Orders: [order@signalwayantibody.com](mailto:order@signalwayantibody.com)Support: [tech@signalwayantibody.com](mailto:tech@signalwayantibody.com)

## Description

Product Name	EP-CAM Polyclonal Antibody
Host Species	Rabbit
Clonality	Polyclonal
Purification	The antibody was affinity-purified from rabbit antiserum by affinity-chromatography using epitope-specific immunogen.
Applications	WB ELISA
Species Reactivity	Hu Ms Rt
Specificity	EP-CAM Polyclonal Antibody detects endogenous levels of EP-CAM protein.
Immunogen Type	peptide
Immunogen Description	Synthesized peptide derived from the Internal region of human EP-CAM.
Target Name	EP-CAM
Other Names	EPCAM; GA733-2; M1S2; M4S1; MIC18; TACSTD1; TROP1; Epithelial cell adhesion molecule; Ep-CAM; Adenocarcinoma-associated antigen; Cell surface glycoprotein Trop-1; Epithelial cell surface antigen; Epithelial glycoprotein; EGP; Epithelial glycoprotein 314;
Accession No.	Swiss-Prot: P16422NCBI Gene ID: 4072
Uniprot	P16422
GeneID	4072;
SDS-PAGE MW	35kd
Concentration	1mg/ml
Formulation	Liquid in PBS containing 50% glycerol, 0.5% BSA and 0.02% sodium azide.
Storage	Store at -20°C/1 year

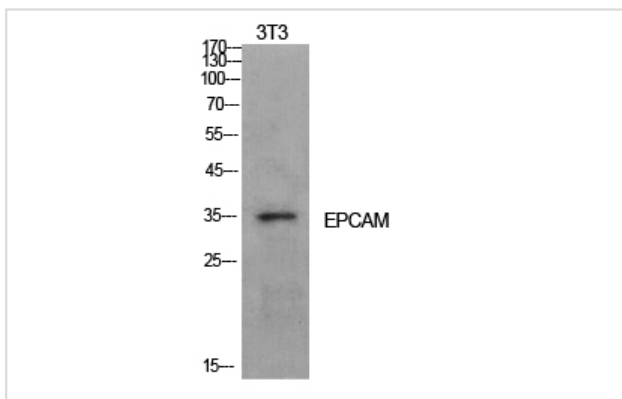
## Application Details

Western Blot: 1/500 - 1/2000.

ELISA: 1/10000.

Not yet tested in other applications.

## Images



Western Blot analysis of NIH-3T3 cells using EP-CAM Polyclonal Antibody

---

Note: This product is for in vitro research use only