

## AAT Polyclonal Antibody

Catalog No: #41927

Package Size: #41927-1 50ul #41927-2 100ul

Orders: order@signalwayantibody.com

Support: tech@signalwayantibody.com

## Description

Product Name	AAT Polyclonal Antibody
Host Species	Rabbit
Clonality	Polyclonal
Purification	The antibody was affinity-purified from rabbit antiserum by affinity-chromatography using epitope-specific immunogen.
Applications	WB ELISA
Species Reactivity	Hu
Specificity	AAT Polyclonal Antibody detects endogenous levels of AAT protein.
Immunogen Type	peptide
Immunogen Description	Synthesized peptide derived from the N-terminal region of human AAT.
Target Name	AAT
Other Names	SERPINA1; AAT; PI; Alpha-1-antitrypsin; Alpha-1 protease inhibitor; Alpha-1-antiproteinase; Serpin A1
Accession No.	Swiss-Prot: P01009NCBI Gene ID: 5265
Uniprot	P01009
GeneID	5265;
SDS-PAGE MW	47kd
Concentration	1mg/ml
Formulation	Liquid in PBS containing 50% glycerol, 0.5% BSA and 0.02% sodium azide.
Storage	Store at -20°C/1 year

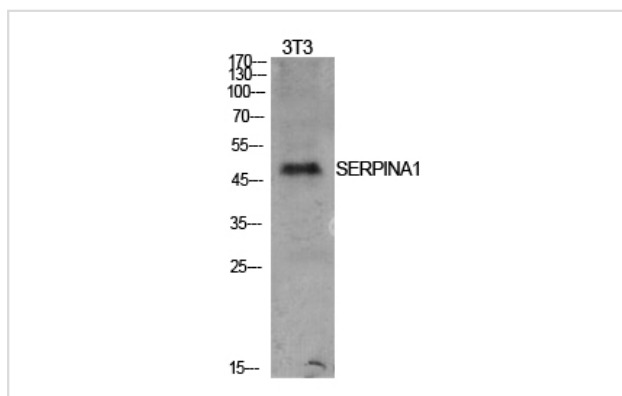
## Application Details

Western Blot: 1/500 - 1/2000.

ELISA: 1/10000.

Not yet tested in other applications.

## Images



Western Blot analysis of NIH-3T3 cells using AAT Polyclonal Antibody

---

Note: This product is for in vitro research use only