

## VPAC1 Polyclonal Antibody

Catalog No: #41940

Package Size: #41940-1 50ul #41940-2 100ul

Orders: [order@signalwayantibody.com](mailto:order@signalwayantibody.com)Support: [tech@signalwayantibody.com](mailto:tech@signalwayantibody.com)

## Description

Product Name	VPAC1 Polyclonal Antibody
Host Species	Rabbit
Clonality	Polyclonal
Purification	The antibody was affinity-purified from rabbit antiserum by affinity-chromatography using epitope-specific immunogen.
Applications	WB ELISA
Species Reactivity	Hu
Specificity	VPAC1 Polyclonal Antibody detects endogenous levels of VPAC1 protein.
Immunogen Type	peptide
Immunogen Description	Synthesized peptide derived from the Internal region of human VPAC1.
Target Name	VPAC1
Other Names	VIPR1; Vasoactive intestinal polypeptide receptor 1; VIP-R-1; Pituitary adenylate cyclase-activating polypeptide type II receptor; PACAP type II receptor; PACAP-R-2; PACAP-R2; VPAC1
Accession No.	Swiss-Prot: P32241NCBI Gene ID: 7433
Uniprot	P32241
GeneID	7433;
SDS-PAGE MW	50kd
Concentration	1mg/ml
Formulation	Liquid in PBS containing 50% glycerol, 0.5% BSA and 0.02% sodium azide.
Storage	Store at -20°C/1 year

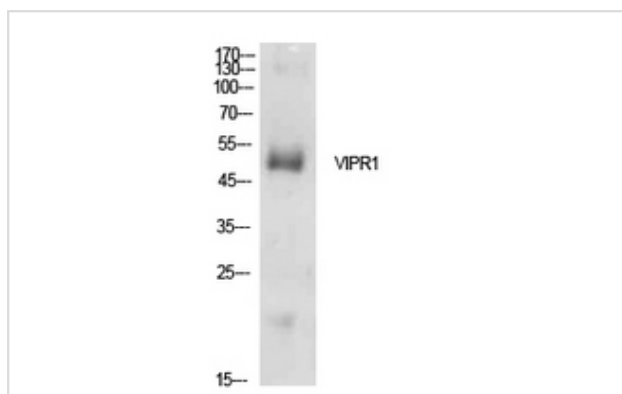
## Application Details

Western Blot: 1/500 - 1/2000.

ELISA: 1/10000.

Not yet tested in other applications.

## Images



Western Blot analysis of HepG2 cells using VPAC1 Polyclonal Antibody.

---

Note: This product is for in vitro research use only