

SOD-2 Polyclonal Antibody

Catalog No: #41941

Package Size: #41941-1 50ul #41941-2 100ul

Orders: order@signalwayantibody.comSupport: tech@signalwayantibody.com

Description

Product Name	SOD-2 Polyclonal Antibody
Host Species	Rabbit
Clonality	Polyclonal
Purification	The antibody was affinity-purified from rabbit antiserum by affinity-chromatography using epitope-specific immunogen.
Applications	WB ELISA
Species Reactivity	Hu Ms Rt
Specificity	SOD-2 Polyclonal Antibody detects endogenous levels of SOD-2 protein.
Immunogen Type	peptide
Immunogen Description	Synthesized peptide derived from the Internal region of human SOD-2.
Target Name	SOD-2
Other Names	SOD2; Superoxide dismutase [Mn], mitochondrial
Accession No.	Swiss-Prot: P04179NCBI Gene ID: 6648
Uniprot	P04179
GeneID	6648;
SDS-PAGE MW	24kd
Concentration	1mg/ml
Formulation	Liquid in PBS containing 50% glycerol, 0.5% BSA and 0.02% sodium azide.
Storage	Store at -20°C/1 year

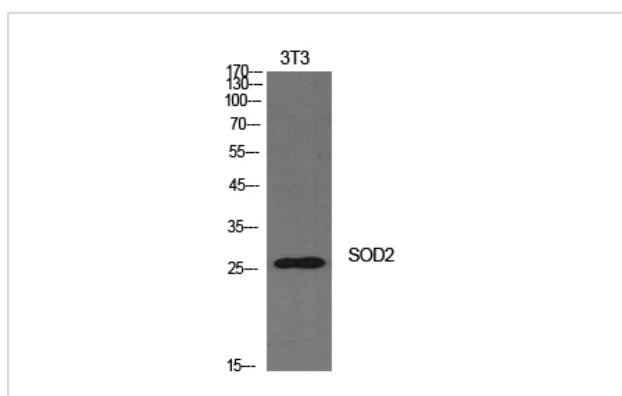
Application Details

Western Blot: 1/500 - 1/2000.

ELISA: 1/10000.

Not yet tested in other applications.

Images



Western Blot analysis of NIH-3T3 cells using SOD-2 Polyclonal Antibody

Note: This product is for in vitro research use only