

## Talin-1 Polyclonal Antibody

Catalog No: #41942

Package Size: #41942-1 50ul #41942-2 100ul

Orders: [order@signalwayantibody.com](mailto:order@signalwayantibody.com)Support: [tech@signalwayantibody.com](mailto:tech@signalwayantibody.com)

## Description

Product Name	Talin-1 Polyclonal Antibody
Host Species	Rabbit
Clonality	Polyclonal
Purification	The antibody was affinity-purified from rabbit antiserum by affinity-chromatography using epitope-specific immunogen.
Applications	WB ELISA
Species Reactivity	Hu Ms Rt
Specificity	Talin-1 Polyclonal Antibody detects endogenous levels of Talin-1 protein.
Immunogen Type	peptide
Immunogen Description	Synthesized peptide derived from the C-terminal region of human Talin-1.
Target Name	Talin-1
Other Names	TLN1; KIAA1027; TLN; Talin-1
Accession No.	Swiss-Prot: Q9Y490NCBI Gene ID: 7094
Uniprot	Q9Y490
GeneID	7094;
SDS-PAGE MW	269kd
Concentration	1mg/ml
Formulation	Liquid in PBS containing 50% glycerol, 0.5% BSA and 0.02% sodium azide.
Storage	Store at -20°C/1 year

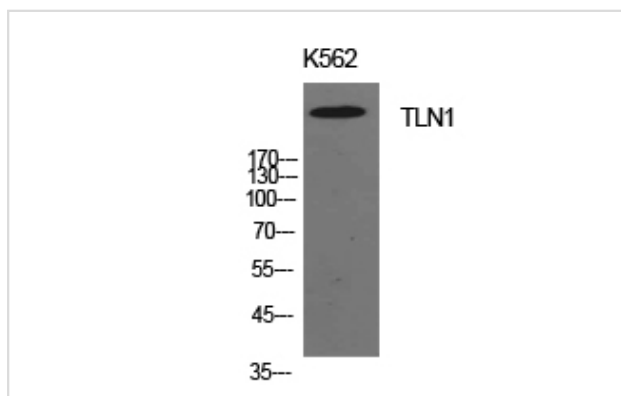
## Application Details

Western Blot: 1/500 - 1/2000.

ELISA: 1/10000.

Not yet tested in other applications.

## Images



Western Blot analysis of K562 cells using Talin-1 Polyclonal Antibody

---

Note: This product is for in vitro research use only