

CD6 Polyclonal Antibody

Catalog No: #41943

Package Size: #41943-1 50ul #41943-2 100ul

Orders: order@signalwayantibody.com

Support: tech@signalwayantibody.com

Description

Product Name	CD6 Polyclonal Antibody
Host Species	Rabbit
Clonality	Polyclonal
Purification	The antibody was affinity-purified from rabbit antiserum by affinity-chromatography using epitope-specific immunogen.
Applications	WB ELISA
Species Reactivity	Hu
Specificity	CD6 Polyclonal Antibody detects endogenous levels of CD6 protein.
Immunogen Type	peptide
Immunogen Description	Synthesized peptide derived from the Internal region of human CD6.
Target Name	CD6
Other Names	CD6; T-cell differentiation antigen CD6; T12; TP120; CD6
Accession No.	Swiss-Prot: P30203NCBI Gene ID: 923
Uniprot	P30203
GeneID	923;
SDS-PAGE MW	73kd
Concentration	1mg/ml
Formulation	Liquid in PBS containing 50% glycerol, 0.5% BSA and 0.02% sodium azide.
Storage	Store at -20°C/1 year

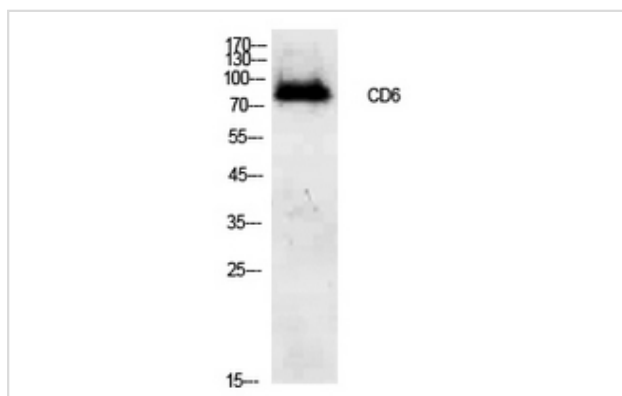
Application Details

Western Blot: 1/500 - 1/2000.

ELISA: 1/10000.

Not yet tested in other applications.

Images



Western Blot analysis of 293 cells using CD6 Polyclonal Antibody.

Note: This product is for in vitro research use only