

CD21 Polyclonal Antibody

Catalog No: #41948

Package Size: #41948-1 50ul #41948-2 100ul

Orders: order@signalwayantibody.com

Support: tech@signalwayantibody.com

Description

Product Name	CD21 Polyclonal Antibody
Host Species	Rabbit
Clonality	Polyclonal
Purification	The antibody was affinity-purified from rabbit antiserum by affinity-chromatography using epitope-specific immunogen.
Applications	WB ELISA
Species Reactivity	Hu
Specificity	CD21 Polyclonal Antibody detects endogenous levels of CD21 protein.
Immunogen Type	peptide
Immunogen Description	Synthesized peptide derived from the Internal region of human CD21.
Target Name	CD21
Other Names	CR2; C3DR; Complement receptor type 2; Cr2; Complement C3d receptor; Epstein-Barr virus receptor; EBV receptor; CD21
Accession No.	Swiss-Prot: P20023NCBI Gene ID: 1380
Uniprot	P20023
GeneID	1380;
SDS-PAGE MW	115kd
Concentration	1mg/ml
Formulation	Liquid in PBS containing 50% glycerol, 0.5% BSA and 0.02% sodium azide.
Storage	Store at -20°C/1 year

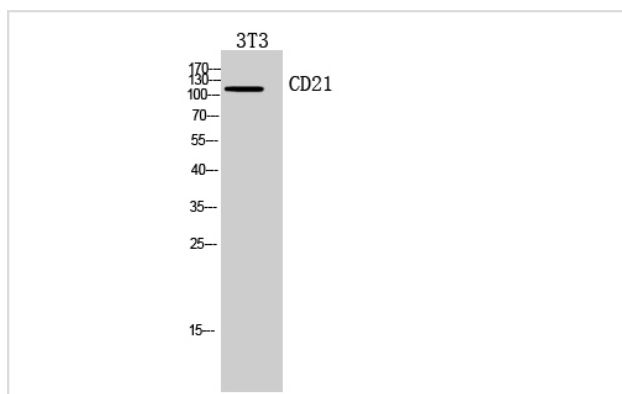
Application Details

Western Blot: 1/500 - 1/2000.

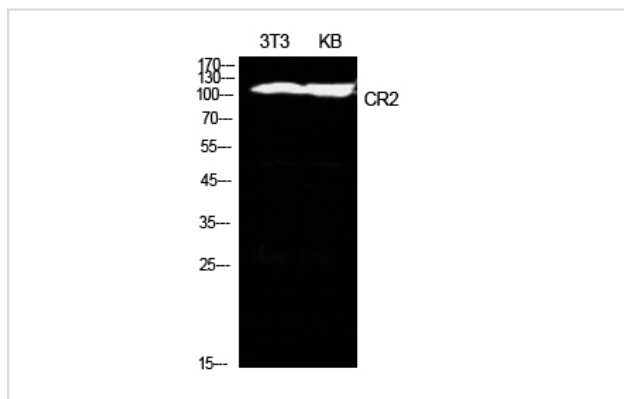
ELISA: 1/10000.

Not yet tested in other applications.

Images



Western Blot analysis of 3T3 cells using CD21 Polyclonal Antibody



Western Blot analysis of NIH-3T3 KB cells using CD21 Polyclonal Antibody

Note: This product is for in vitro research use only