

CD33 Polyclonal Antibody

Catalog No: #41950

Package Size: #41950-1 50ul #41950-2 100ul

Orders: order@signalwayantibody.comSupport: tech@signalwayantibody.com

Description

Product Name	CD33 Polyclonal Antibody
Host Species	Rabbit
Clonality	Polyclonal
Purification	The antibody was affinity-purified from rabbit antiserum by affinity-chromatography using epitope-specific immunogen.
Applications	WB ELISA
Species Reactivity	Hu
Specificity	CD33 Polyclonal Antibody detects endogenous levels of CD33 protein.
Immunogen Type	peptide
Immunogen Description	Synthesized peptide derived from the Internal region of human CD33.
Target Name	CD33
Other Names	CD33; SIGLEC3; Myeloid cell surface antigen CD33; Sialic acid-binding Ig-like lectin 3; Siglec-3; gp67; CD33
Accession No.	Swiss-Prot: P20138NCBI Gene ID: 945
Uniprot	P20138
GeneID	945;
SDS-PAGE MW	40kd
Concentration	1mg/ml
Formulation	Liquid in PBS containing 50% glycerol, 0.5% BSA and 0.02% sodium azide.
Storage	Store at -20°C/1 year

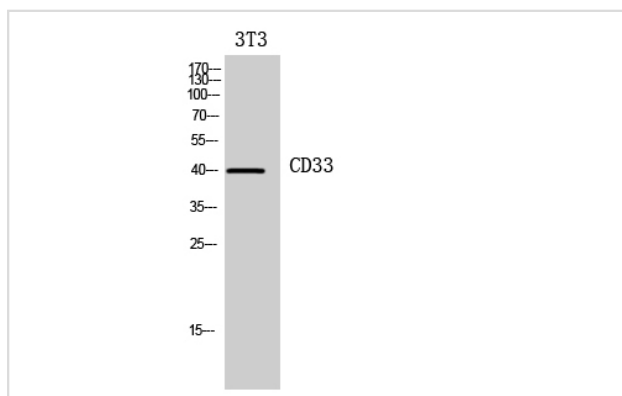
Application Details

Western Blot: 1/500 - 1/2000.

ELISA: 1/10000.

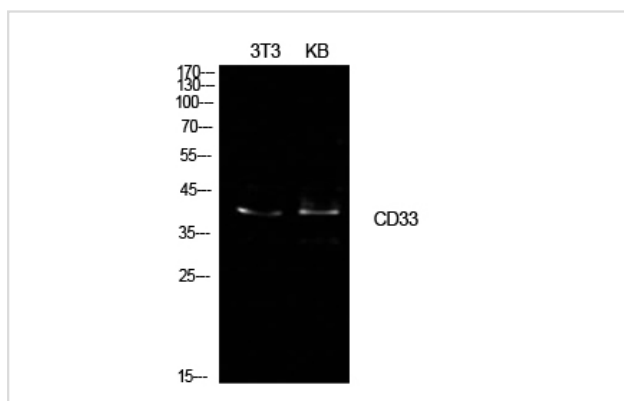
Not yet tested in other applications.

Images



Western Blot analysis of 3T3 cells using CD33 Polyclonal Antibody

Western Blot analysis of NIH-3T3 KB cells using CD33 Polyclonal Antibody



Note: This product is for in vitro research use only