

## CD42d Polyclonal Antibody

Catalog No: #41952

Package Size: #41952-1 50ul #41952-2 100ul

Orders: order@signalwayantibody.com

Support: tech@signalwayantibody.com

## Description

Product Name	CD42d Polyclonal Antibody
Host Species	Rabbit
Clonality	Polyclonal
Purification	The antibody was affinity-purified from rabbit antiserum by affinity-chromatography using epitope-specific immunogen.
Applications	WB ELISA
Species Reactivity	Hu Ms Rt
Specificity	CD42d Polyclonal Antibody detects endogenous levels of CD42d protein.
Immunogen Type	peptide
Immunogen Description	Synthesized peptide derived from the Internal region of human CD42d.
Target Name	CD42d
Other Names	GP5; Platelet glycoprotein V; GPV; Glycoprotein 5; CD42d
Accession No.	Swiss-Prot: P40197NCBI Gene ID: 2814
Uniprot	P40197
GeneID	2814;
SDS-PAGE MW	62kd
Concentration	1mg/ml
Formulation	Liquid in PBS containing 50% glycerol, 0.5% BSA and 0.02% sodium azide.
Storage	Store at -20°C/1 year

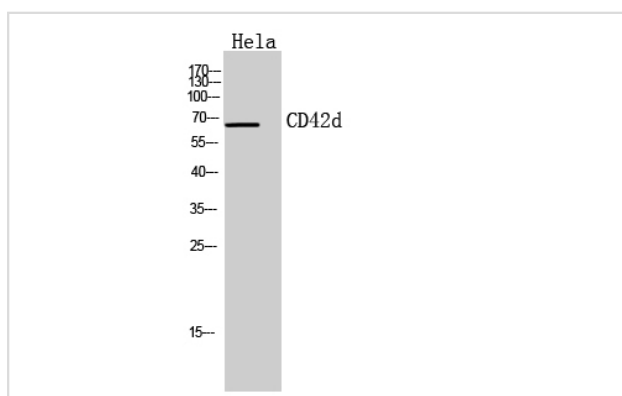
## Application Details

Western Blot: 1/500 - 1/2000.

ELISA: 1/10000.

Not yet tested in other applications.

## Images



Western Blot analysis of HeLa cells using CD42d Polyclonal Antibody

---

Note: This product is for in vitro research use only