

Integrin $\alpha 5$ Polyclonal Antibody

Catalog No: #41954

Package Size: #41954-1 50ul #41954-2 100ul

Orders: order@signalwayantibody.com

Support: tech@signalwayantibody.com

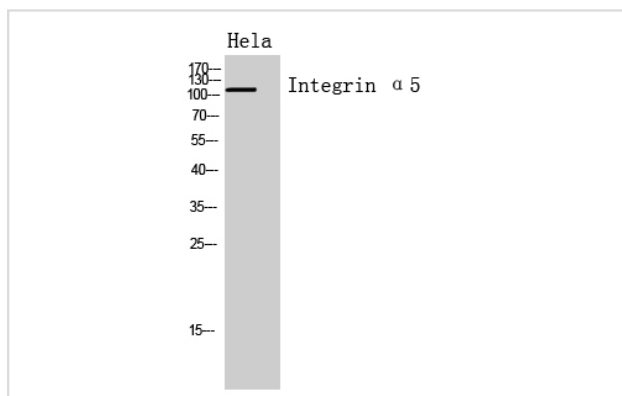
Description

Product Name	Integrin $\alpha 5$ Polyclonal Antibody
Host Species	Rabbit
Clonality	Polyclonal
Purification	The antibody was affinity-purified from rabbit antiserum by affinity-chromatography using epitope-specific immunogen.
Applications	WB;IHC;IF;ELISA
Species Reactivity	Hu Ms Rt
Specificity	Integrin $\alpha 5$ Polyclonal Antibody detects endogenous levels of Integrin $\alpha 5$ protein.
Immunogen Description	The antiserum was produced against synthesized peptide derived from the Internal region of human ITGA5. AA range:561-610
Target Name	Integrin $\alpha 5$
Other Names	ITGA5; FNRA; Integrin alpha-5; CD49 antigen-like family member E; Fibronectin receptor subunit alpha; Integrin alpha-F; VLA-5; CD49e
Accession No.	Swiss-Prot: P08648NCBI Gene ID: 3678
Uniprot	P08648
GeneID	3678;
SDS-PAGE MW	115kd
Concentration	1mg/ml
Formulation	Liquid in PBS containing 50% glycerol, 0.5% BSA and 0.02% sodium azide.
Storage	Store at -20°C/1 year

Application Details

WB 1:500 - 1:2000. IHC-p: 1:100-1:300. ELISA: 1:10000.. IF 1:50-200

Images

Western Blot analysis of HeLa cells using Integrin $\alpha 5$ Polyclonal Antibody

Note: This product is for in vitro research use only