

Integrin $\alpha 6$ Polyclonal Antibody

Catalog No: #41955

Package Size: #41955-1 50ul #41955-2 100ul

Orders: order@signalwayantibody.com

Support: tech@signalwayantibody.com

Description

Product Name	Integrin $\alpha 6$ Polyclonal Antibody
Host Species	Rabbit
Clonality	Polyclonal
Purification	The antibody was affinity-purified from rabbit antiserum by affinity-chromatography using epitope-specific immunogen.
Applications	WB ELISA
Species Reactivity	Hu Ms Rt
Specificity	Integrin $\alpha 6$ Polyclonal Antibody detects endogenous levels of Integrin $\alpha 6$ protein.
Immunogen Type	peptide
Immunogen Description	Synthesized peptide derived from the Internal region of human Integrin $\alpha 6$.
Target Name	Integrin $\alpha 6$
Other Names	ITGA6; Integrin alpha-6; CD49 antigen-like family member F; VLA-6; CD49f
Accession No.	Swiss-Prot: P23229NCBI Gene ID: 3655
Uniprot	P23229
GeneID	3655;
SDS-PAGE MW	125kd
Concentration	1mg/ml
Formulation	Liquid in PBS containing 50% glycerol, 0.5% BSA and 0.02% sodium azide.
Storage	Store at -20°C/1 year

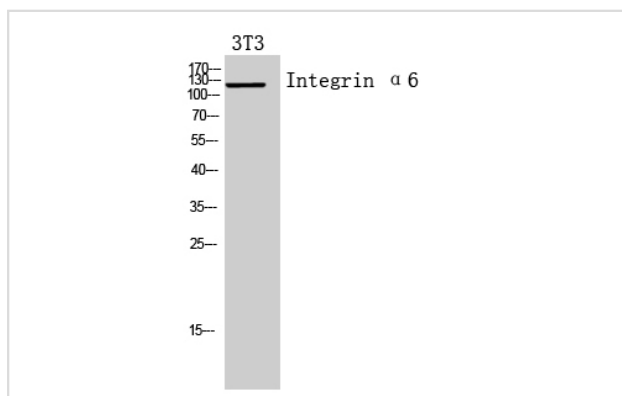
Application Details

Western Blot: 1/500 - 1/2000.

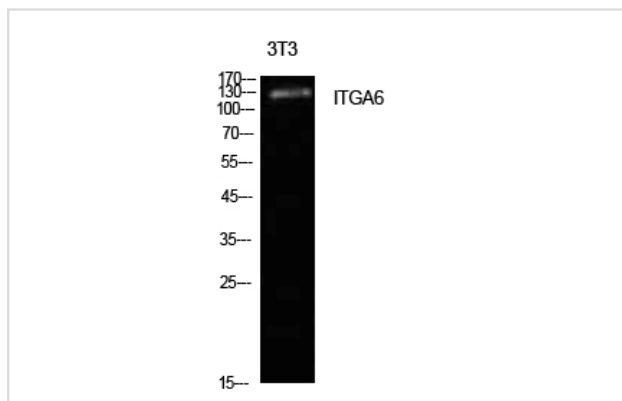
ELISA: 1/10000.

Not yet tested in other applications.

Images

Western Blot analysis of 3T3 cells using Integrin $\alpha 6$ Polyclonal Antibody

Western Blot analysis of NIH-3T3 cells using Integrin $\alpha 6$
Polyclonal Antibody



Note: This product is for in vitro research use only