

## P-Selectin Polyclonal Antibody

Catalog No: #41958

Package Size: #41958-1 50ul #41958-2 100ul

Orders: [order@signalwayantibody.com](mailto:order@signalwayantibody.com)Support: [tech@signalwayantibody.com](mailto:tech@signalwayantibody.com)

## Description

Product Name	P-Selectin Polyclonal Antibody
Host Species	Rabbit
Clonality	Polyclonal
Purification	The antibody was affinity-purified from rabbit antiserum by affinity-chromatography using epitope-specific immunogen.
Applications	WB ELISA IHCy • IF
Species Reactivity	Hu Ms Rt
Specificity	P-Selectin Polyclonal Antibody detects endogenous levels of P-Selectin protein.
Immunogen Description	Synthesized peptide derived from the N-terminal region of human P-Selectin.
Target Name	P-Selectin
Other Names	SELP; GMRP; GRMP; P-selectin; CD62 antigen-like family member P; Granule membrane protein 140; GMP-140; Leukocyte-endothelial cell adhesion molecule 3; LECAM3; Platelet activation dependent granule-external membrane protein; PADGEM; CD62P
Accession No.	Swiss-Prot: P16109NCBI Gene ID: 6403
Uniprot	P16109
GeneID	6403;
SDS-PAGE MW	91kd
Concentration	1mg/ml
Formulation	Liquid in PBS containing 50% glycerol, 0.5% BSA and 0.02% sodium azide.
Storage	Store at -20°C/1 year

## Application Details

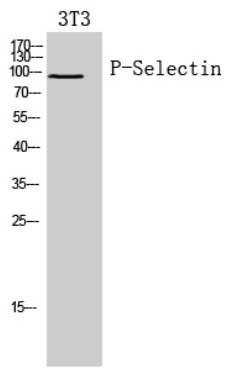
Western Blot: 1/500 - 1/2000.

IHC-p: 1:100-1:300

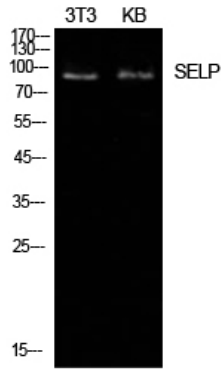
ELISA: 1/10000.

Not yet tested in other applications.

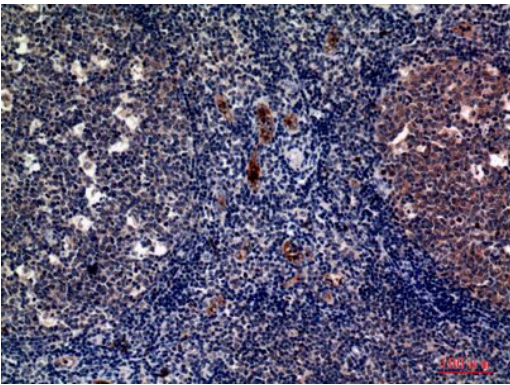
## Images



Western Blot analysis of 3T3 cells using P-Selectin Polyclonal Antibody



Western Blot analysis of NIH-3T3 KB cells using P-Selectin Polyclonal Antibody



Immunohistochemical analysis of paraffin-embedded human-tonsils, antibody was diluted at 1:100

Note: This product is for in vitro research use only